



One Bedroom Apartment

The Meadows, Chester Road, Ash, GU12 6BB

Price: £190,000

- One Bedroom First Floor Apartment
- Recently Refurbished and Improved Throughout
- Allocated Parking and Visitors Spaces
- Low Monthly Service Charge and No Ground Rent
- Share of Freehold
- Close to Ash Train Station
- Quiet Location
- EPC: C (69)



Description

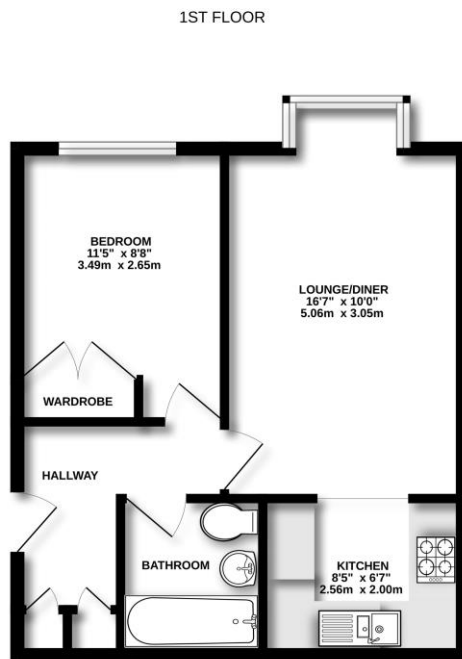
Situated in a brilliant location in Ash, within moments of Ash Train Station, is this well presented one bedroom flat - which offers convenience and modern living. Built 30 years ago, the home has been thoughtfully maintained and updated recently with a new kitchen, retiled bathroom and new flooring throughout - as well as stylish new doors. It also benefits from loft access for additional storage and the roof has been recently refurbished for added peace of mind. The property is share of freehold, with low charges and a 986 year lease. Externally, the property includes allocated parking, visitor spaces and an electric car charging point. With excellent transport links and local amenities nearby, this home is perfect for first time buyers, downsizers, or investors. Viewing is highly recommended!

Outside

Externally, the property includes allocated parking, visitor spaces and an electric car charging point. There are also communal gardens for any resident to enjoy.

To view the Material Information Certificate for this property please click [Here](#) or contact us to request a copy.

Floorplan



Measurements are approximate. Not to scale. Illustrative purposes only.
Made with Metreage 12/2025



TO ARRANGE A VIEWING PLEASE CONTACT:
Tel: **01252 361550** or Email: **info@bridges.co.uk**



Important Notice - These particulars are set out as a general outline only for the guidance of intended purchasers/tenants and do not form part of any offer or contract and must not be relied upon as statements or representations of fact. Purchasers/Tenants must satisfy themselves by inspection or otherwise as to their correctness.