



Three Bedroom Semi-Detached House

Lynn Way, Farnborough, Hampshire, GU14 8RT

Guide Price: £425,000

- Three Bedrooms
- Driveway Parking
- South Easterly Garden
- Popular Location
- Separate Garage
- Close to Schools
- Close to Shops
- EPC: TBC



Description

Nestled in a highly desirable residential area, this charming three bedroom semi-detached family home offers the perfect blend of comfort, convenience, and style. Ideally situated within close proximity to a range of well regarded schools, local shops, and excellent transport links, this property is perfectly suited for growing families and commuters alike.

Upon entering the property, you are greeted by a bright and spacious hallway benefiting from a cloakroom and leading on to the well designed lounge/diner, conservatory and fitted kitchen both providing access out to the garden.

Upstairs the property boasts three bedrooms all with built-in wardrobes and updated bathroom with separate toilet.

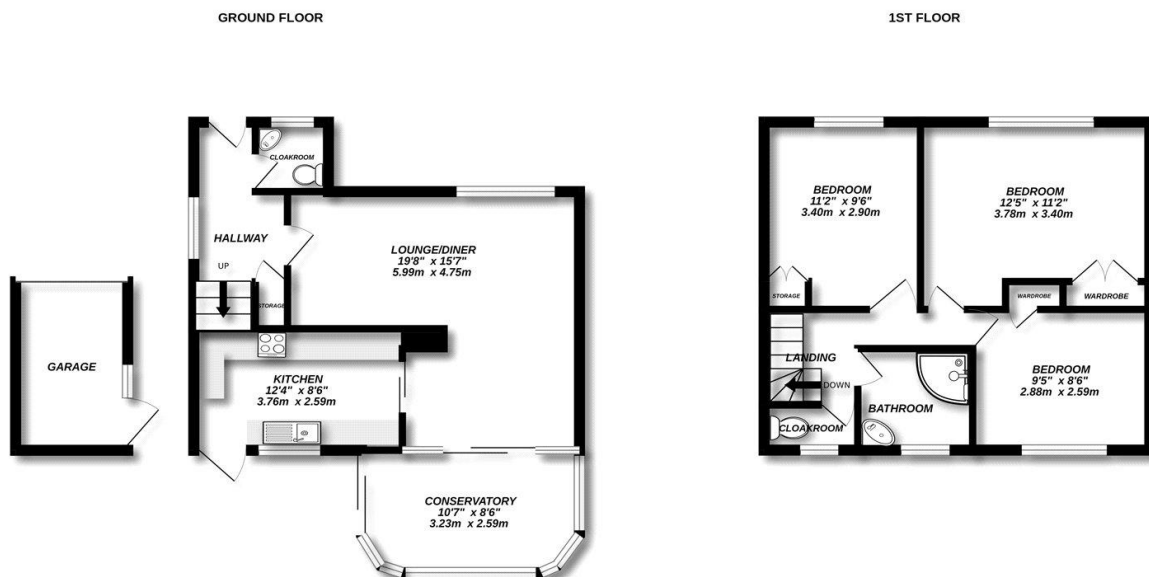
With its prime location and well balanced living space, this property offers a fantastic opportunity to secure a wonderful family home in a thriving community. Early viewing is highly recommended.

Outside

To the front the property benefits from ample driveway parking leading down to the rear garden and detached garage. The South Easterly rear garden boasts an array of potted plants, flower beds and designated seating areas to enjoy the sunshine throughout the day with a generous patio area perfect for entertaining guests.

To view the Material Information Certificate for this property please click [Here](#) or contact us to request a copy.

Floorplan



Made with Metropix ©2025



TO ARRANGE A VIEWING PLEASE CONTACT:
Tel: 01252 361550 or Email: info@bridges.co.uk



Important Notice - These particulars are set out as a general outline only for the guidance of intended purchasers/tenants and do not form part of any offer or contract and must not be relied upon as statements or representations of fact. Purchasers/Tenants must satisfy themselves by inspection or otherwise as to their correctness.