

Two Bedroom Apartment

Wilton Road, Camberley, Surrey, GU15 2TX

Price: £300,000

- Two Bedrooms
- Top floor Apartment
- Communal Gardens
- Parking
- Bins Storage
- Close to Camberley Town Centre
- 100% Share
- EPC: B (85)



Description

100% SHARED OWNERSHIP WITH 35% SHARE AVAILABLE

Welcome to this spacious 768 square foot two-bedroom third floor apartment, situated in the desirable Pembroke House. This delightful residence features an open plan kitchen/living room, creating a bright and spacious atmosphere that is perfect for modern living, further emphasised with the Juliette balcony. The well-appointed bathroom ensures convenience and comfort. Additional highlights include ample storage space, a reliable lift for easy access, and beautifully maintained communal gardens. The property includes a designated bin storage area for added practicality, and a parking space. Enjoy the benefits of a long lease and an ideal location just moments away from local shops and amenities. This apartment is perfect for first time buyers or investors looking for a quality property in a sought-after area.

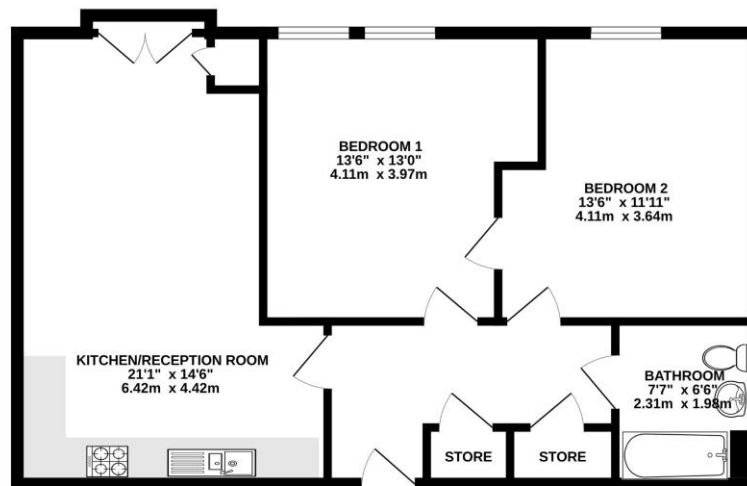
Outside

Pembroke House is also conveniently located, being just a short drive from junction four of the M3 if travelling by car. The property comes with use of an off-street parking space and benefits from communal gardens.

To view the Material Information Certificate for this property please click [Here](#) or contact us to request a copy.

Floorplan

THIRD FLOOR



Whilst every attempt has been made to ensure the accuracy of the floorplan contained here, measurements of floors, walls, rooms and any other items are approximate and no responsibility is taken for any error, omission or mis-statement. This plan is for illustrative purposes only and should be used as such by any prospective purchaser. The services, systems and appliances shown have not been tested and no guarantee as to their operability or efficiency can be given.
Made with Metropac ©2025



TO ARRANGE A VIEWING PLEASE CONTACT:

Tel: 01276 685544 or Email:

camberley@bridges.co.uk



Important Notice - These particulars are set out as a general outline only for the guidance of intended purchasers/tenants and do not form part of any offer or contract and must not be relied upon as statements or representations of fact. Purchasers/Tenants must satisfy themselves by inspection or otherwise as to their correctness.