



One Double Bedroom Apartment

Rochford House, Sopwith Drive, Farnborough, Hampshire, GU14 6GP

Price: £230,000

- One Double Bedroom
- Second Floor Apartment
- Allocated Parking
- Open Plan Living
- Modern Development
- Lift Access
- Security Entrance
- EPC: B (85)



Description

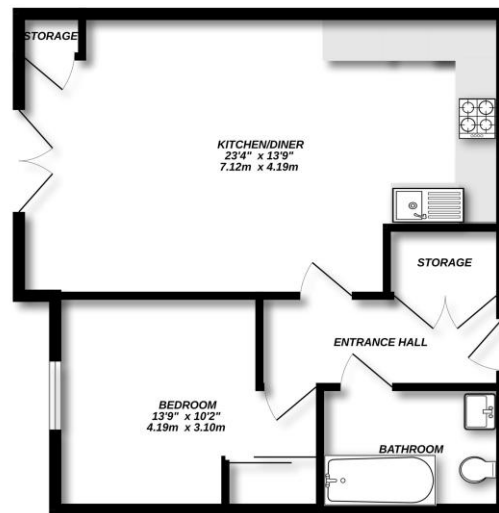
Coming to the market in immaculate condition throughout, is this well presented double bedroom apartment. Found on the 2nd floor, this property is serviced by both lift and stairs so accessible for all buyers. The living room and kitchen is a great open plan space, the kitchen having the benefit of having built in appliances and plenty of worktop space, an ideal place for those who like to socialise. The bedroom is a fantastic sized double, with lots of natural light flooding through and the added bonus of a built in wardrobe space. The entrance hall is spacious, with a larger than average utility cupboard and modern family bathroom.

Outside

The property comes with an allocated parking space, as well as plenty of visitor spaces. Being within walking distance of Farnborough Business Park is ideal for those who work there and like a good walk. You have handy access to the M3, A331 and Farnborough Main station.

To view the Material Information Certificate for this property please click [Here](#) or contact us to request a copy.

Floorplan



Made with Maplogic (2022)



TO ARRANGE A VIEWING PLEASE CONTACT:
Tel: **01252 361550** or Email: info@bridges.co.uk



Important Notice - These particulars are set out as a general outline only for the guidance of intended purchasers/tenants and do not form part of any offer or contract and must not be relied upon as statements or representations of fact. Purchasers/Tenants must satisfy themselves by inspection or otherwise as to their correctness.