



Four Bedroom Terraced House

Tebbit Close, Bracknell, Berkshire, RG12 9BA

Price: £425,000

- Four/Five Bedrooms Town House
- Kitchen/Diner
- Living Room
- 80ft Rear Garden
- Popular Schools Location
- Close to Town Centre
- Off Road Parking
- EPC: TBC



Description

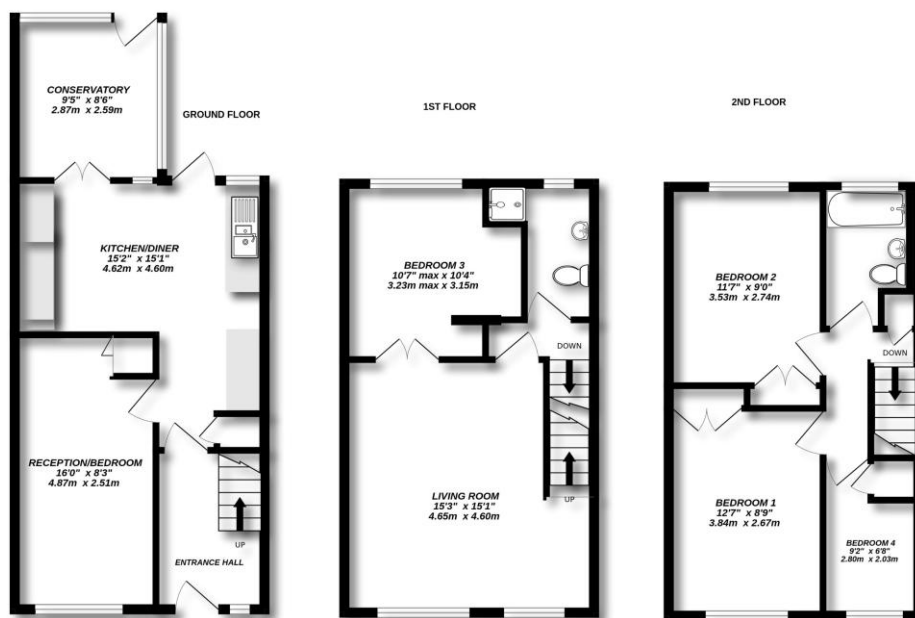
Located near a sought after primary schools and an outstanding rated Ranelagh secondary school, we are pleased to present this townhouse offering versatile accommodation, allowing you to customise it to your liking. Situated very close to Bracknell town centre, Lexicon Shopping Centre, and the mainline railway station, this home features four/five bedrooms (including four doubles), a spacious kitchen/diner, a reception room/bedroom, and a conservatory on the ground floor. Upstairs, you'll find a living room, another bedroom, and a shower room on the first floor, with three additional bedrooms and a family bathroom on the second floor. Ideal for families or as an investment opportunity, this property boasts an impressive south-westerly facing 80ft garden, ample off road parking, gas radiator central heating, and is offered with no onward chain.

Outside

The rear garden provides the perfect space for making it your own, there is a paved patio, the remainder is laid to lawn and includes a vegetable patch and wooden shed, the garden is approx. 80ft.

To view the Material Information Certificate for this property please click [Here](#) or contact us to request a copy.

Floorplan



TO ARRANGE A VIEWING PLEASE CONTACT:

Tel: **01344 962150** or Email:



Important Notice - These particulars are set out as a general outline only for the guidance of intended purchasers/tenants and do not form part of any offer or contract and must not be relied upon as statements or representations of fact. Purchasers/Tenants must satisfy themselves by inspection or otherwise as to their correctness.