



Two Bedroom End of Terrace House

Pinewood Park, Farnborough, Hampshire, GU14 9JT

Price: £275,000

- Two Double Bedroom End of Terrace Home
- Spacious Living Room
- Parking and a Garden Measuring Circa 60 Foot
- Popular Pinewood Park development
- An Ideal First Buy or Investment Opportunity
- Gas Central Heating and Double Glazing
- In a Excellent Location
- EPC: E (43)



Description

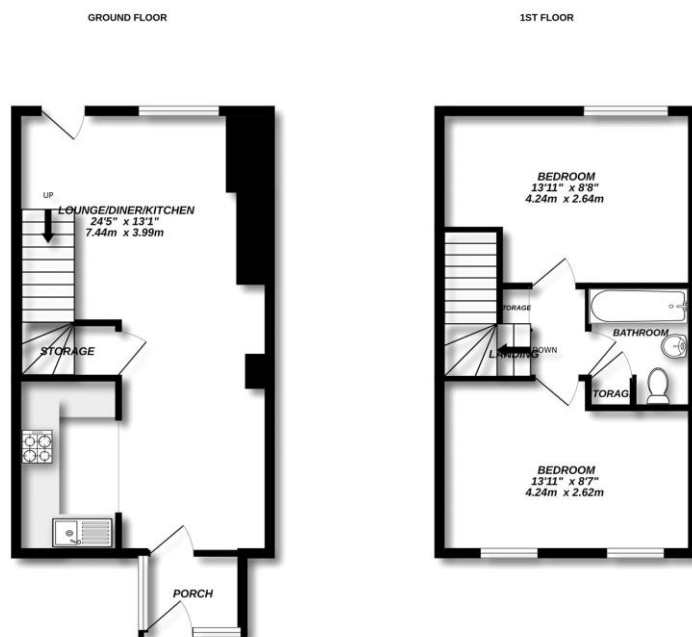
This two double bedroom home offers bright and spacious living areas that further benefit from gas central heating and double glazing. Forming the hub of the home is a spacious living room with a dual rear aspect outlook that opens to the garden patio. Benefitting from plenty of natural light, this central living space provides an adaptable setting with an open view over the kitchen/breakfast room. With the living room providing useful understairs storage and the kitchen featuring space for a seating area and appliances. Further benefits from an entrance porch, which introduces natural light. To the first floor are two double bedrooms and bathroom suite.

Outside

The sizeable rear garden, measuring circa 60 feet is enclosed by fencing and laid to lawn, with a patio area and gated access to the parking spaces.

To view the Material Information Certificate for this property please click [Here](#) or contact us to request a copy

Floorplan



TO ARRANGE A VIEWING PLEASE CONTACT:
Tel: **01252 361550** or Email: **info@bridges.co.uk**



Important Notice - These particulars are set out as a general outline only for the guidance of intended purchasers/tenants and do not form part of any offer or contract and must not be relied upon as statements or representations of fact. Purchasers/Tenants must satisfy themselves by inspection or otherwise as to their correctness.