



Four Bedroom Semi-Detached House

Ash Lodge Drive, Ash, Surrey, GU12 6LP

Offers in Excess of: £500,000

- Four/Five Bedroom Semi-Detached
- Downstairs Shower Room
- Driveway
- Integral Garage
- Walking Distance to Amenities
- Complete Chain Above
- Extended
- EPC: TBC



Description

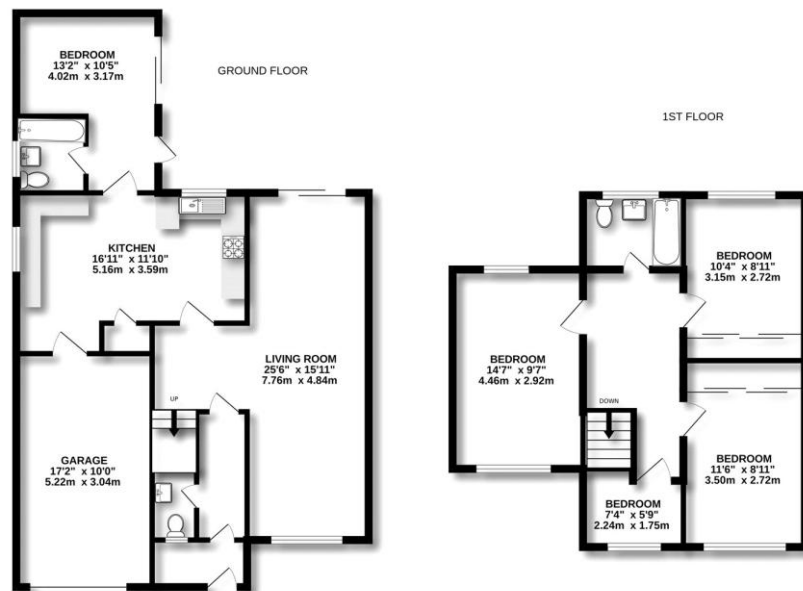
****COMPLETE CHAIN**** Offered to the market is this spacious four / five bedroom semi-detached house, the property is within a short walk of the local amenities, local rail station and offers easy access onto the A331, A3 and M3. Inside the property boasts plenty of living accommodation, this includes a spacious living room / diner with doors that lead out into the garden, a well sized kitchen with plenty of cupboard and worktop space and a cloakroom. In addition, there is a shower room and an additional reception room / bedroom. Upstairs boasts a bathroom suite, three good size double bedrooms and a single bedroom / office.

Outside

Outside boasts a garage, driveway for multiple vehicles and a private enclosed rear garden with side access.

To view the Material Information Certificate for this property please click [Here](#) or contact us to request a copy

Floorplan



TO ARRANGE A VIEWING PLEASE CONTACT:
Tel: **01252 361550** or Email: **info@bridges.co.uk**



Important Notice - These particulars are set out as a general outline only for the guidance of intended purchasers/tenants and do not form part of any offer or contract and must not be relied upon as statements or representations of fact. Purchasers/Tenants must satisfy themselves by inspection or otherwise as to their correctness.