



AWARD ROAD | CHURCH CROOKHAM


**Platinum
Homes**
BY BRIDGES



The Property

Situated within close proximity to local shops, schools and amenities, this beautifully presented detached family home was recently constructed to a high standard throughout.

Approaching almost 2,000 square feet in accommodation, the property perfectly suits those who like to entertain, with the centrepiece of the home being the 27' open plan kitchen/dining room with bi-folding doors to the rear garden. Completing the ground floor accommodation are two further reception rooms, a cloakroom, and a utility room. Moving upstairs, there are four generously proportioned double bedrooms, the principal suite boasting an en suite shower room plus a further bath/shower room.

There is easy access to surrounding countryside including Fleet Pond Nature Reserve, a notable beauty spot. In addition to the town's desirable location, this contributes to why Fleet has recently been voted the best place to live in the UK by the Halifax 'Quality of Life' study and making Fleet a popular choice for families and commuters alike.



Outside

The property is set at the end of a private driveway in a secluded position and offers parking for several vehicles.

A tranquil brook runs along the perimeter edge with double gates that provide access to a courtyard/storage area with a further gate leading to the landscaped rear garden.

The rear garden boasts a patio seating area, artificial lawn, an abundance of external evening lighting and a woodland view.



Features

- Four Bedrooms
- 27' Open Plan Kitchen/Dining Room
- En Suite to the Principal Bedroom
- High Specification
- Private Driveway
- Landscaped Garden
- No Onward Chain
- EPC: B (83)
- Council Tax Band: F

Contact

Philip Gascoyne

pgascoyne@platinumbybridges.co.uk

01252 975501

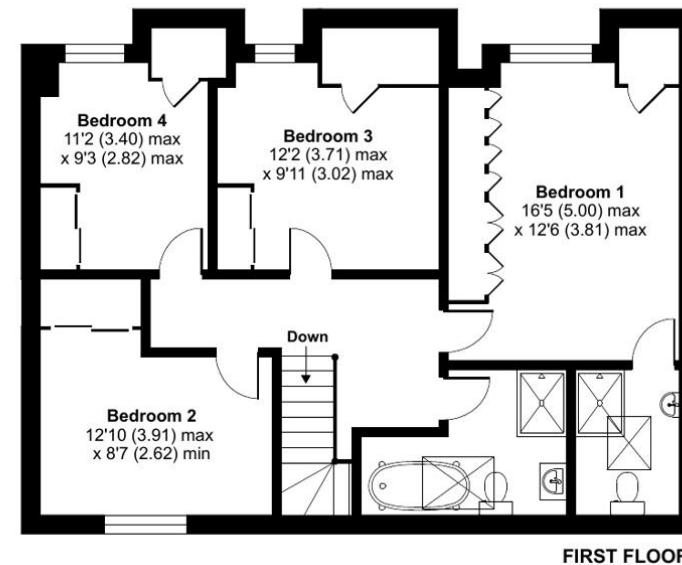
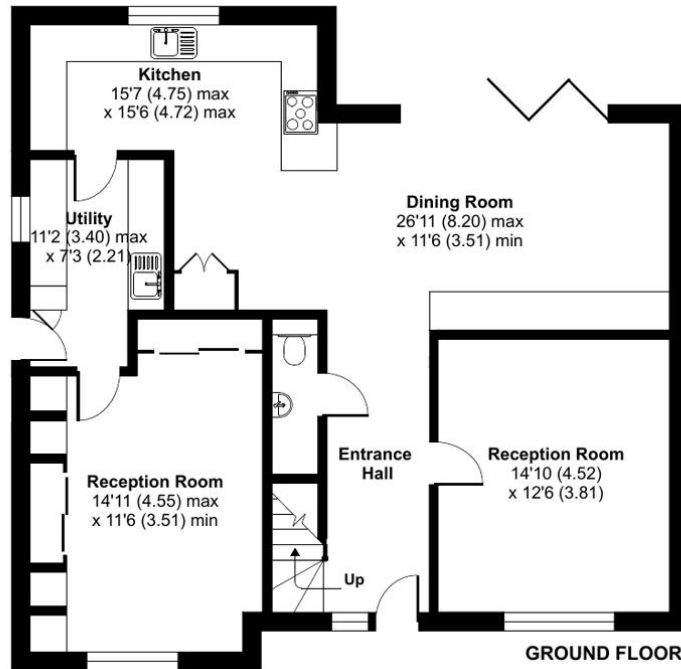

**Platinum
Homes**
BY BRIDGES



Award Road, Church Crookham, Fleet, GU52

Approximate Area = 1913 sq ft / 177.7 sq m

For identification only - Not to scale



Floor plan produced in accordance with RICS Property Measurement Standards incorporating International Property Measurement Standards (IPMS2 Residential). © nichecom 2024.
Produced for Bridges Estate Agents Ltd (Platinum Homes). REF: 1088477

**Platinum
Homes**
BY BRIDGES

Important Notice - These particulars are set out as a general outline only for the guidance of intended purchasers and do not form part of any offer or contract and must not be relied upon as statements or representations of fact. Purchasers must satisfy themselves by inspection or otherwise as to their correctness.

