



Two Bedroom Terraced House

Hythe Close, Bracknell, Berkshire, RG12 0UY

Price: £335,000

- Two Double Bedroom Terraced Family Home
- Cul-de-Sac Location
- Driveway Parking for Three Vehicles
- Refitted Kitchen
- Rear Aspect Living Room
- Refitted Bathroom
- No Onward Chain
- EPC: C (71)



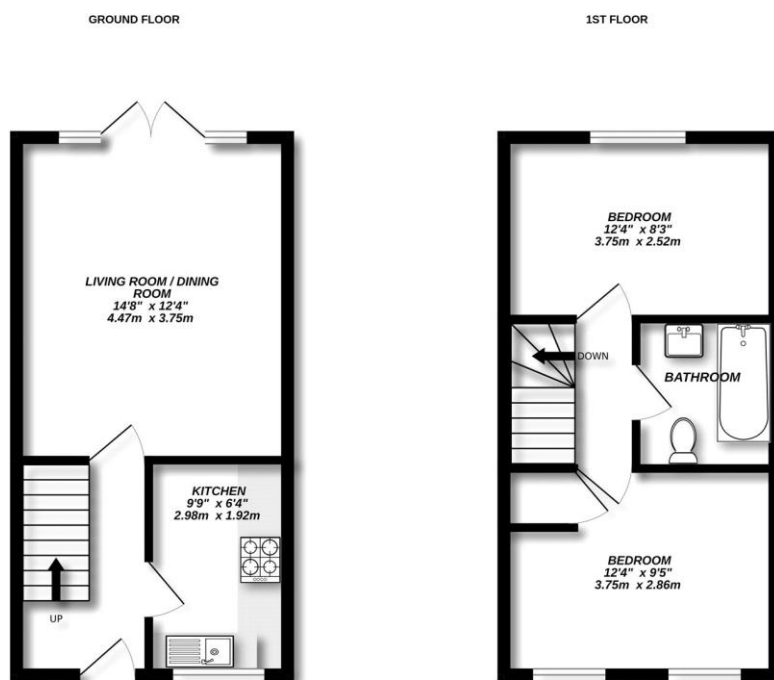
Description

Nestled in a peaceful cul-de-sac just moments from Marten Heron Train Station, this beautifully presented two bedroom house offers modern living in a highly convenient location. Ideal for first time buyers, young professionals or downsizers - the property combines stylish interiors with practical living spaces and excellent transport links. Inside, you'll find a bright and spacious open plan living and dining area - complemented by a sleek contemporary kitchen with integrated appliances and ample storage. Good sized windows provide plenty of natural light throughout the home, creating a warm and welcoming atmosphere. Upstairs, there are two well proportioned double bedrooms and a modern family bathroom. Outside, the property benefits from a private rear garden, perfect for relaxing, entertaining or enjoying a sunny afternoon. There is also dedicated off street parking for three vehicles. Located just a short walk from Martins Heron Train Station, commuting to the city or surrounding areas is quick and convenient. Local shops, schools, parks, and amenities are also within easy reach, making this an ideal location for comfortable, connected living.

Outside

The private sunny rear garden is mainly laid to lawn and fully enclosed.

Floorplan



Made with Metropix ©2025



TO ARRANGE A VIEWING PLEASE CONTACT:

Tel: **01344 962150** or Email:



Important Notice - These particulars are set out as a general outline only for the guidance of intended purchasers/tenants and do not form part of any offer or contract and must not be relied upon as statements or representations of fact. Purchasers/Tenants must satisfy themselves by inspection or otherwise as to their correctness.