



Five Bedroom Semi-Detached House

Ives Close, Yateley, Hants, GU46 7RD

Guide Price: £635,000

- Four/Five Bedrooms
- Skilfully Extended
- Modernised Family Home
- Luxury Refitted 17' Kitchen/Breakfast Room
- Three Bathrooms
- Cul De Sac Location
- Private Enclosed Rear Garden
- EPC: C (69)



Description

A stunning and cleverly extended fully modernised family home located in a popular cul de sac in the picturesque village of Yateley. Accommodation comprises: Entrance hall, living room, refitted 17' luxury refitted kitchen/breakfast room, refitted bathroom, utility room and a study and family room to the ground floor. The first floor boasts four bedrooms, a refitted en suite shower room and a refitted bathroom. Externally there is off street parking for several vehicles and an enclosed low maintenance rear garden with a spacious outbuilding.

Outside

Being of low maintenance with artificial lawn and a paved raised patio with sleepers and a spacious shed/cabin to the rear boundary and fully enclosed.

To view the Material Information Certificate for this property please click [Here](#) or contact us to request a copy

Floorplan

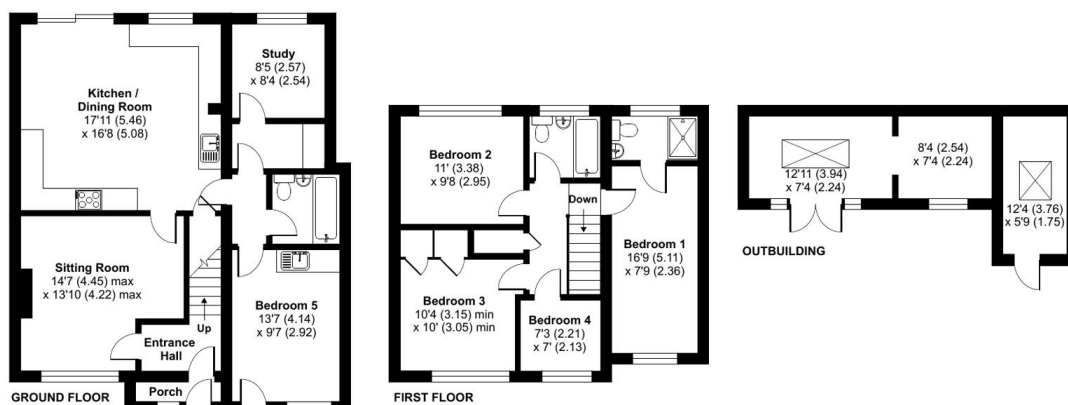
Ives Close, Yateley, Hants, GU46

Approximate Area = 1518 sq ft / 141 sq m

Outbuilding = 240 sq ft / 22.2 sq m

Total = 1758 sq ft / 163.3 sq m

For identification only - Not to scale



Floor plan produced in accordance with RICS Property Measurement 2nd Edition, incorporating International Property Measurement Standards (IPMS2 Residential). © nitchcom 2025. Produced for Bridges Estate Agents. REF: 1326350

Bridges
Estate Agents

Bridges

TO ARRANGE A VIEWING PLEASE CONTACT:

Tel: **01344 962150** or Email:



Important Notice - These particulars are set out as a general outline only for the guidance of intended purchasers/tenants and do not form part of any offer or contract and must not be relied upon as statements or representations of fact. Purchasers/Tenants must satisfy themselves by inspection or otherwise as to their correctness.