

## Two Bedroom Apartment

**Shetland Road, Basingstoke, Hampshire, RG24 9WH**

Price: £180,000

- Two Bedrooms
- First Floor Apartment
- Balcony
- No Chain
- Ample Communal Parking
- Security Entry System
- Gas Central Heating
- EPC: B (82)



## Description

Offered to the market with no onward chain is this first floor apartment, ideal for first time buyers or investors. Accessed via a communal entrance with a lift to the first floor, the apartment comprises two bedrooms, a family bathroom, and an open plan lounge with kitchenette. The living area opens onto a private balcony, offering a pleasant outdoor space.

Additional benefits include gas fired central heating and double glazing throughout.

This property offers convenient, low maintenance living in a well connected location.

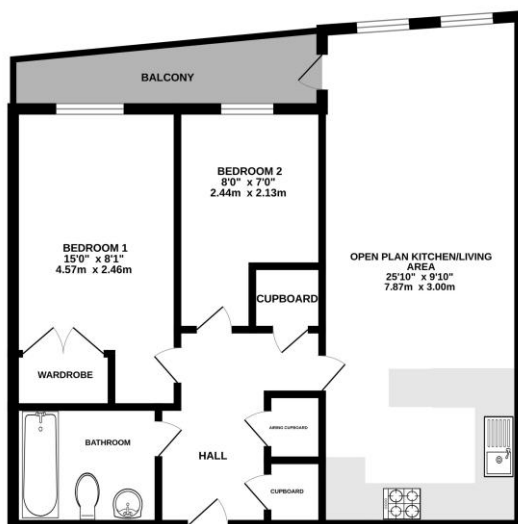
## Outside

Externally, there is ample communal parking for residents and visitors. To the rear of the building, you'll find a children's play area, ideal for families or visiting guests.

This apartment offers low maintenance living with added convenience in a well connected location.

## Floorplan

GROUND FLOOR



Whilst every attempt has been made to ensure the accuracy of the floorplan contained herein, measurements of doors, windows, rooms and any other items are approximate and no responsibility is taken for any error, omission or mis-statement. This plan is for illustrative purposes only and should be used as such by any prospective purchaser. The services, fixtures and appliances shown hereon are shown based and no guarantee as to their quantity or efficiency can be given.  
Made with Metaplan 12/02/20



**TO ARRANGE A VIEWING PLEASE CONTACT:**  
Tel: **01256 880001** or Email: **info@bridges.co.uk**



**Important Notice** - These particulars are set out as a general outline only for the guidance of intended purchasers/tenants and do not form part of any offer or contract and must not be relied upon as statements or representations of fact. Purchasers/Tenants must satisfy themselves by inspection or otherwise as to their correctness.