



SILCHESTER ROAD | LITTLE LONDON

  
**Platinum  
Homes**  
BY BRIDGES





## The Property

Set in the desirable village of Little London, this impressive four-bedroom detached home offers modern family living with a touch of luxury and charm throughout.

Welcomed by a central staircase and stylish panelled walls, double doors lead you into a warm and inviting living room, complete with a feature media wall that is perfect for cosy evenings and relaxing in comfort. The heart of the home is the stunning open plan kitchen/dining/family room designed for both everyday living and entertaining; it features a well-equipped kitchen with an island and integrated appliances. Bi-fold doors flood the space with natural light and lead out to the garden, offering beautiful views over open fields. There is also a dedicated study and a generous utility/boot room, providing practicality and remote working/additional storage options.

Upstairs, the bright and airy landing benefits from higher-than-average ceilings, a feature carried through the entire first floor. The spacious principal bedroom boasts its own en suite shower room with premium bronze fixtures for a stylish, high-end finish. There are three further double bedrooms, two of which feature built-in wardrobes. All bedrooms enjoy generous proportions and an abundance of natural light.

## Outside

The rear garden is a key feature of this home with a paved patio area, perfect for entertaining, and a lawn that backs onto open fields, offering both privacy and scenic views.

The front of the property has a shingle driveway, accessed via double gates, with parking for multiple vehicles. There is side access and EV charging points.





# Features

- Four Bedrooms
- Feature Central Staircase
- Spacious Kitchen/Dining/Family Room
- Study Room and Boot Room
- Underfloor Heating to Both Floors
- Principal Bedroom with En Suite
- Gated Shingle Driveway with EV Charging Point
- EPC: TBC
- Council Tax Band: TBC

## Contact

**Philip Gascoyne**

[pgascoyne@platinumbybridges.co.uk](mailto:pgascoyne@platinumbybridges.co.uk)

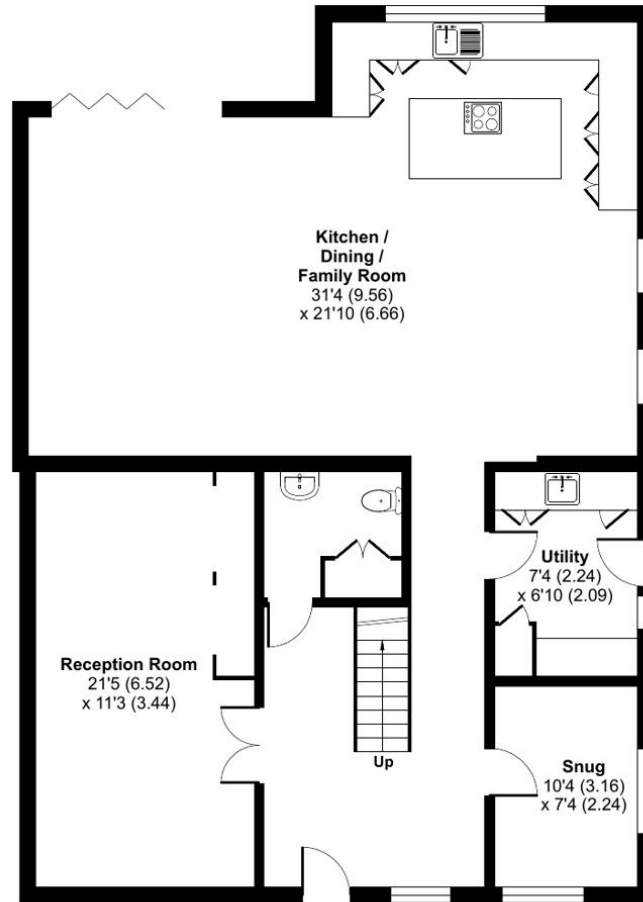
01252 975501



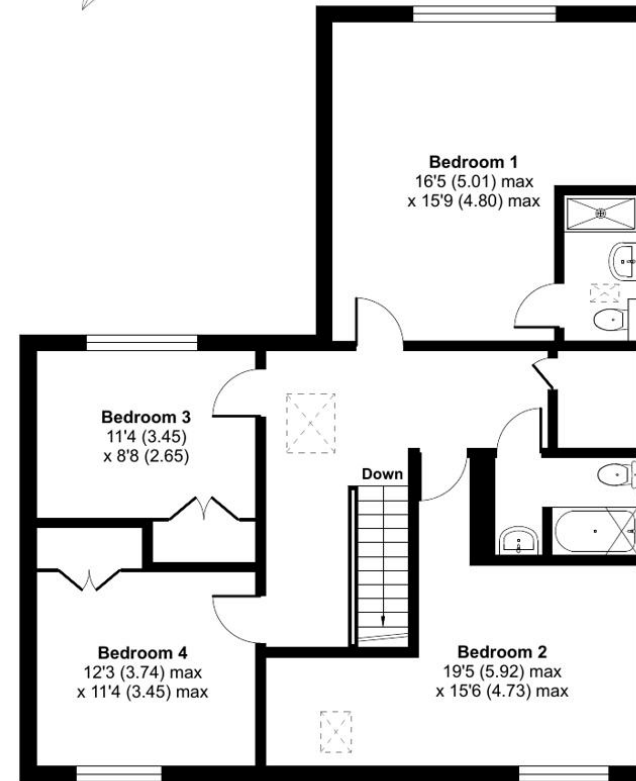
## Silchester Road, Tadley, RG26

Approximate Area = 2243 sq ft / 208.4 sq m

For identification only - Not to scale



GROUND FLOOR



FIRST FLOOR



Floor plan produced in accordance with RICS Property Measurement Standards incorporating International Property Measurement Standards (IPMS2 Residential). © nitchcom 2024.  
Produced for Bridges Estate Agents Ltd (Platinum Homes). REF: 1088477

**Platinum  
Homes**  
BY BRIDGES

Important Notice - These particulars are set out as a general outline only for the guidance of intended purchasers and do not form part of any offer or contract and must not be relied upon as statements or representations of fact. Purchasers must satisfy themselves by inspection or otherwise as to their correctness.



