



Two Bedroom End of Terrace House

Hopper Vale, Bracknell, Berkshire, RG12 7GH

Price: £375,000

- Two Bedroom Family Home
- Refitted Kitchen
- Two Double Bedrooms
- Allocated Parking
- Gas Central Heating
- Cul-de-Sac Location
- Excellent Decorative Order
- EPC: C (73)



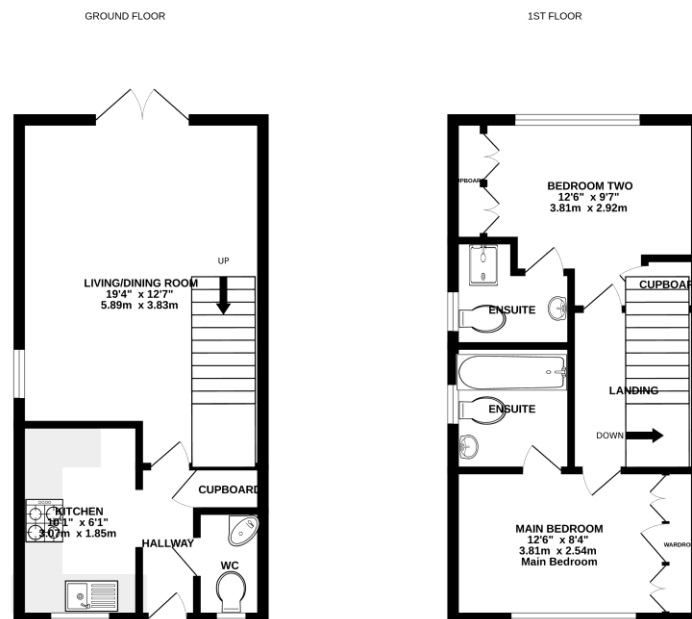
Description

Nestled within the sought after Sovereign Fields development, Easthampstead this charming end of terrace family home offers a blend of comfort and convenience. Featuring two spacious double bedrooms, it includes a stylish cloakroom, a recently refurbished kitchen, and a rear facing living room that bathes in natural light. What sets this home apart are not just one, but two en suite bathrooms, perfect for modern living. Located in a peaceful cul-de-sac, the property is meticulously maintained, boasting impeccable interior decor. Off street parking adds to the practicality, ensuring ease of access. As a bonus, the seller is offering up to £2,000 towards the buyer's legal fees, subject to terms and conditions. With no onward chain, seize this opportunity to make this delightful home yours!

Outside

Private enclosed rear garden with a paved area and the remainder is laid with artificial grass.

Floorplan



Whilst every attempt has been made to ensure the accuracy of the floorplan contained herein, measurements of doors, windows, rooms and any other items are approximate and no responsibility is taken for any error, omission or mis-statement. This plan is for illustrative purposes only and should be used as such by any prospective purchaser. The services, systems and appliances shown have not been tested and no guarantee as to their operability or efficiency can be given.
Made with Metreplan CDS2



TO ARRANGE A VIEWING PLEASE CONTACT:

Tel: **01344 962150** or Email:



Important Notice - These particulars are set out as a general outline only for the guidance of intended purchasers/tenants and do not form part of any offer or contract and must not be relied upon as statements or representations of fact. Purchasers/Tenants must satisfy themselves by inspection or otherwise as to their correctness.