



## Two Bedroom Terraced House

**Twisell Thorne, Church Crookham, Fleet, Hampshire, GU52 0YT**

**Price: £350,000**

- Two Bedrooms
- Terraced House
- Living/Dining Room
- Modern Kitchen
- Garage
- Allocated Parking
- Zebon Copse Estate
- EPC: C (70)





## Description

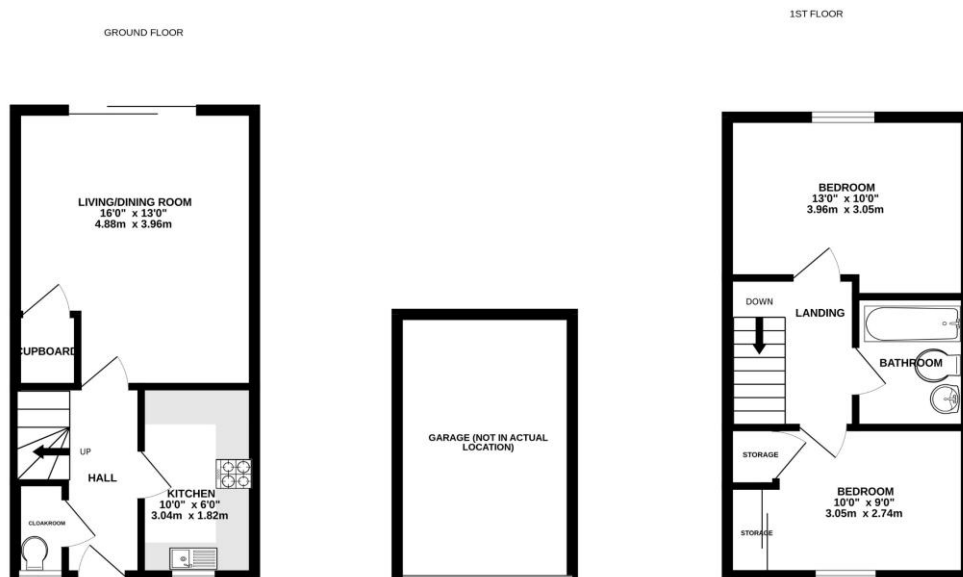
Offered with no onward chain in the ever-popular Zebon Copse is this well-kept two-bedroom home. The property offers a modern and recently refurbished kitchen, with a spacious living/dining area - boasting sliding doors out to the garden. Upstairs, both bedrooms are doubles, with one benefiting from built in storage. There is also a family bathroom. Give us a call today to book your viewing!

## Outside

Thinking of selling or struggling to sell? Get in contact with Bridges, your experienced, local agents and book your free valuation now!

To view the Material Information Certificate for this property please click [Here](#) or contact us to request a copy.

## Floorplan



Whilst every attempt has been made to ensure the accuracy of the floorplan contained here, measurements of doors, windows, rooms and any other items are approximate and no responsibility is taken for any error, omission or mis-statement. This plan is for illustrative purposes only and should be used as such by any prospective purchaser. The services, systems and appliances shown have not been tested and no guarantee as to their operability or efficiency can be given.  
Made with Metropix ©2025



TO ARRANGE A VIEWING PLEASE CONTACT:  
Tel: **01252 361550** or Email: **info@bridges.co.uk**



Important Notice - These particulars are set out as a general outline only for the guidance of intended purchasers/tenants and do not form part of any offer or contract and must not be relied upon as statements or representations of fact. Purchasers/Tenants must satisfy themselves by inspection or otherwise as to their correctness.