



## Three Bedroom Terraced House

### Burleigh Road, Frimley, Surrey, GU16 7EA

Price: £380,000

- Extended Three Bedroom Terrace Home
- Easy Access to High St, Hospital and Travel Links
- Open Plan Kitchen/Dining Room
- Downstairs Cloakroom and Study Area
- Small Low Maintenance Garden
- Driveway and Garage in Block
- Ideal Family Home
- EPC: C (73)





## Description

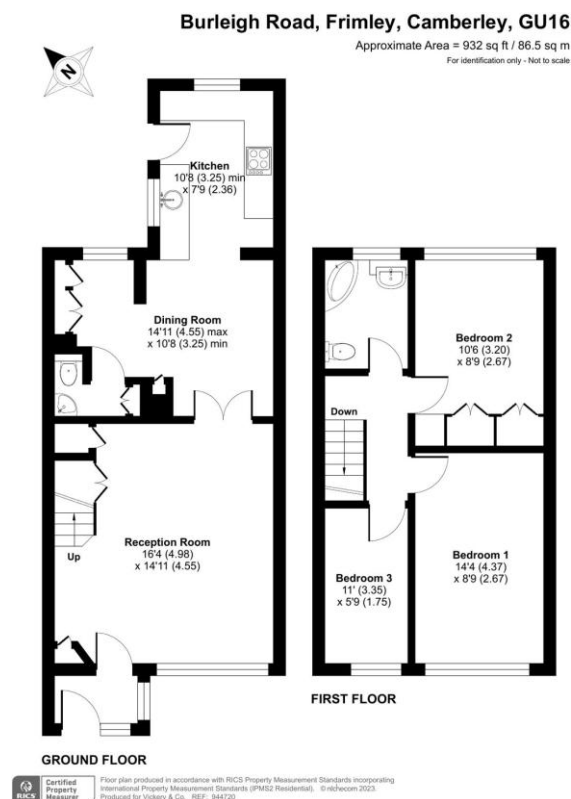
A well presented and extended three bedroom family home, ideally positioned for easy access to Frimley High St, travel links and Frimley Park Hospital. The property offers a good size living room, open plan kitchen/dining area, study area, downstairs cloakroom, gas rad heating, driveway, family bathroom, low maintenance small garden and a garage in nearby block, IDEAL FAMILY HOME.

## Outside

An enclosed small but low maintenance garden, mainly laid to slab and block patio, enclosed by wood panel fencing and rear gated access. There is a driveway to the front and a garage in block.

To view the Material Information Certificate for this property please click [Here](#) or contact us to request a copy

## Floorplan



**TO ARRANGE A VIEWING PLEASE CONTACT:**  
Tel: **01252 361550** or Email: **info@bridges.co.uk**



Important Notice - These particulars are set out as a general outline only for the guidance of intended purchasers/tenants and do not form part of any offer or contract and must not be relied upon as statements or representations of fact. Purchasers/Tenants must satisfy themselves by inspection or otherwise as to their correctness.