



Two Bedroom Apartment

Wetherby Gardens, Farnborough, Hampshire, GU14 6BW

Price: £210,000

- Two Double Bedrooms
- Ground Floor Apartment
- No Onward Chain
- Popular Residential Development
- Close to North Camp Village
- Allocated Parking
- Estimated Rental Price: £1,150 pcm
- EPC: D (66)



Description

Offered to the market with no onward chain is this spacious ground floor apartment situated in a popular residential development within easy access of North Camp village with its variety of local shops, amenities and its close proximity to North Camp train station.

Accessed via a communal entrance the accommodation comprises of an entrance hall, lounge, kitchen with appliances, two double bedrooms and bathroom.

This property is offered to the market to investment buyers only.

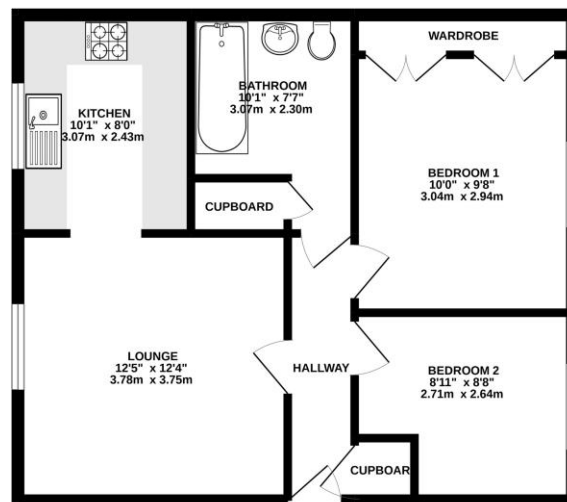
Outside

Externally this spacious apartment offers communal gardens, allocated parking and separate visitors parking.

To view the Material Information Certificate for this property please click [Here](#) or contact us to request a copy.

Floorplan

GROUND FLOOR



Whilst every attempt has been made to ensure the accuracy of the floorplan contained here, measurements of doors, windows, rooms and any other items are approximate and no responsibility is taken for any error, omission or misstatement. This plan is for illustrative purposes only and should be used in conjunction with the prospective purchaser. The services, systems and appliances shown here have not been tested and no guarantee is given as to their operability or efficiency and no guarantee is given as to their condition.



TO ARRANGE A VIEWING PLEASE CONTACT:
Tel: **01252 361550** or Email: **info@bridges.co.uk**



Important Notice - These particulars are set out as a general outline only for the guidance of intended purchasers/tenants and do not form part of any offer or contract and must not be relied upon as statements or representations of fact. Purchasers/Tenants must satisfy themselves by inspection or otherwise as to their correctness.