

One Bedroom Apartment

Park Street, Camberley, Surrey, GU15 3PQ

Guide Price: £160,000

- One Bedroom
- Second Floor
- Executive Apartment
- Well Presented
- Lift Access
- Camberly Town Centre Location
- Access To Good Commuter Links
- EPC: B (85)



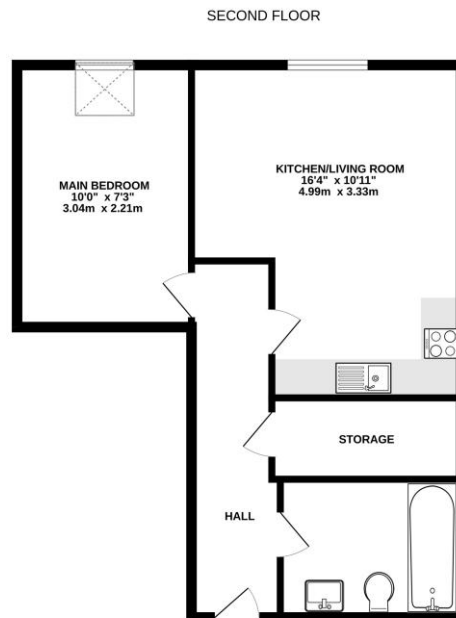
Description

A beautifully presented one bedroom second floor apartment located in the town centre. The property offers light and spacious accommodation with modern executive living in Camberley. The accommodation comprises of an open plan living space to fitted kitchen area, a double bedroom and bathroom. An internal inspection is highly recommended to truly appreciate all that this property has to offer.

Outside

Externally the property benefits from well maintained communal areas with lift as well as bin and bike store.

Floorplan



While every attempt has been made to ensure the accuracy of the floorplan contained herein, measurements of doors, windows, rooms and any other items are approximate and no responsibility is taken for any error, omission or misstatement. This plan is for illustrative purposes only and should be used as a guide only. Prospective purchasers should verify the accuracy of the floorplan and measurements by inspection or otherwise as to their correctness. Measurements are given to the nearest millimetre.



TO ARRANGE A VIEWING PLEASE CONTACT:

Tel: 01276 685544 or Email:

camberley@bridges.co.uk



Important Notice - These particulars are set out as a general outline only for the guidance of intended purchasers/tenants and do not form part of any offer or contract and must not be relied upon as statements or representations of fact. Purchasers/Tenants must satisfy themselves by inspection or otherwise as to their correctness.