



Three Bedroom Terraced House

Woodlands, Fleet, Hampshire, GU51 4NX

Guide Price: £350,000

- Three Double Bedrooms
- Terraced House
- No Onward Chain
- Spacious Open Plan Living/Dining Room
- Walking Distance to Fleet Town Centre
- Good School Catchments
- Garage and Driveway Parking
- EPC: C (70)



Description

Conveniently located within easy walking distance of Fleet town centre and within the catchment area for highly regarded local schools, this three-bedroom terraced home is offered to the market with no onward chain, making it an excellent choice for first-time buyers, young families, or investors alike. The accommodation comprises an entrance porch, downstairs cloakroom, a well-appointed kitchen, and a spacious open-plan living/dining room with patio doors opening onto a south-westerly facing rear garden—perfect for enjoying the afternoon sun and outdoor entertaining. Upstairs, there are three well-proportioned bedrooms and a modern family bathroom, providing comfortable and practical living space throughout. Early viewings are highly recommended to fully appreciate the location and potential of this well-situated home.

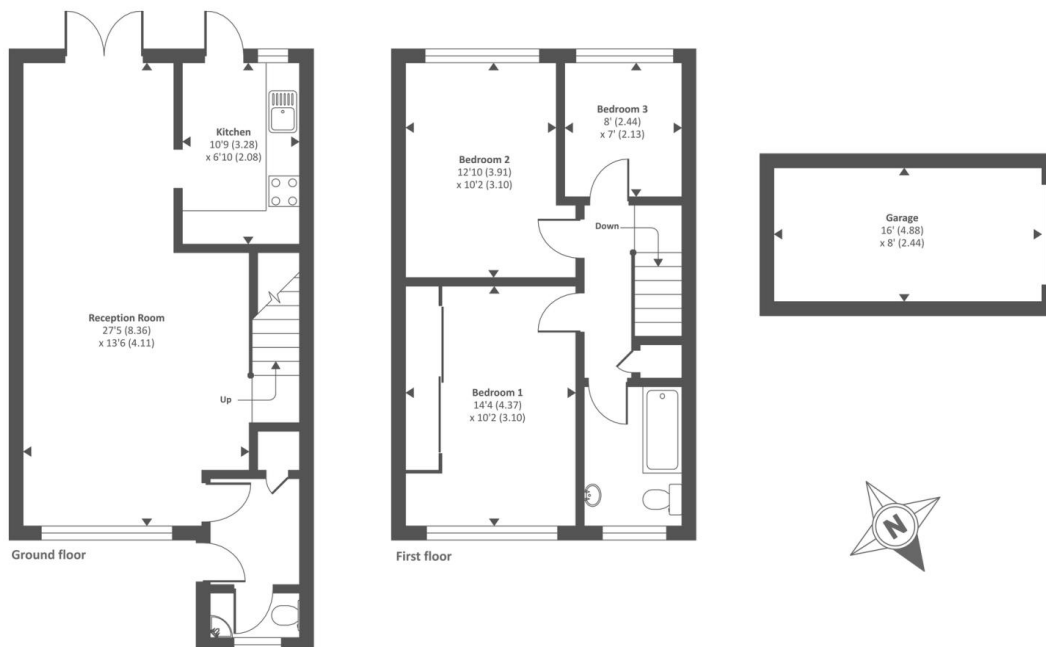
Outside

The property features a shingle-laid front garden. A garage is located in a nearby block. The enclosed rear garden has been paved for low maintenance and includes a brick-built shed in the far corner.

To view the Material Information Certificate for this property please click [Here](#) or contact us to request a copy.

Floorplan

Approximate Area = 1076 sq ft / 99.96 sq m (includes garage)
For identification only - Not to scale



Floor plan produced in accordance with RICS Property Measurement Standards incorporating International Property Measurement Standards (IPMS2 Residential). © nrichcom 2021.



TO ARRANGE A VIEWING PLEASE CONTACT:
Tel: **01252 361550** or Email: **info@bridges.co.uk**



Important Notice - These particulars are set out as a general outline only for the guidance of intended purchasers/tenants and do not form part of any offer or contract and must not be relied upon as statements or representations of fact. Purchasers/Tenants must satisfy themselves by inspection or otherwise as to their correctness.