



## Four Bedroom End of Terrace House

**Bow Drive, Sherfield-on-Loddon, Hook, Hampshire, RG27 0EQ**

Offers Over: £400,000

- Four Double Bedrooms
- End of Terrace House
- Fully Modernised Throughout
- Spacious Lounge Area
- Stylish Fitted Kitchen and Utility Room
- Downstairs Cloak Room
- Private Rear Garden
- EPC: C (70)





## Description

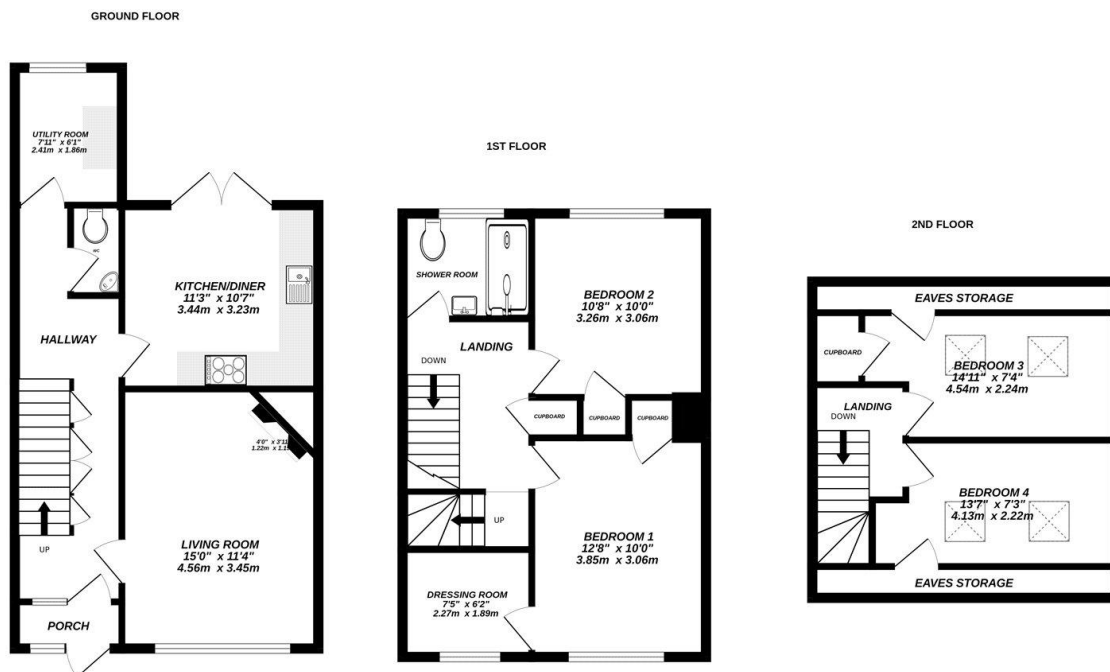
Set in the heart of the sought-after village of Sherfield on Loddon, this four-bedroom end-of-terrace home has been transformed by the current owner into a stylish and contemporary property, ready to move straight into. Every detail has been thoughtfully updated, creating a home that blends modern finishes with versatile living space arranged across three floors. Upon entering, the sense of space and light is immediately apparent. The entrance hall leads to a welcoming lounge, providing the perfect spot to relax and unwind. To the rear, the newly fitted kitchen/dining area form the hub of the home, designed with both everyday living and entertaining in mind. A separate utility room adds valuable practicality, while a downstairs cloakroom completes the ground floor. The first floor hosts a generous principal bedroom with a spacious dressing room, alongside a second double bedroom and a sleek, modern shower room. On the top floor, two further double bedrooms — full of character and complemented by useful eaves storage — provide ideal spaces for family, guests, or even a home office.

## Outside

The appeal of this property continues outside with the front laid to paving, offering a smart and low-maintenance approach. To the rear, there is raised patio steps down to a lawn bordered by mature planting, creating a private and inviting garden to enjoy. Communal on-street parking is also available close by.

To view the Material Information Certificate for this property please click [Here](#) or contact us to request a copy.

## Floorplan



Made with Metropix ©2025



TO ARRANGE A VIEWING PLEASE CONTACT:  
Tel: 01256 769999 or Email: [info@bridges.co.uk](mailto:info@bridges.co.uk)



Important Notice - These particulars are set out as a general outline only for the guidance of intended purchasers/tenants and do not form part of any offer or contract and must not be relied upon as statements or representations of fact. Purchasers/Tenants must satisfy themselves by inspection or otherwise as to their correctness.