



# **STONEHARBOUR HOUSE**

**WINDSOR WAY, ALDERSHOT, GU11 1JG**



# INTRODUCING

## STONEHARBOUR HOUSE

### AVAILABLE TO VIEW IMMEDIATELY

- 15 Brand New Homes
- One Bedroom Apartments
- Gated Development
- Contemporary Kitchens
- Stylish Bathrooms
- Town Centre Location
- Parking
- Walking Distance to Main Train Station



# STONEHARBOUR HOUSE

Stoneharbour House is a delightful development of just 15 units, offering a selection of beautifully designed one-bedroom apartments. Located in the heart of Aldershot, this exclusive gated development enjoys easy access to local amenities and excellent transport links. Each apartment has been thoughtfully designed to suit modern lifestyles, featuring a contemporary layout with a light and airy feel throughout. The spacious open plan lounge/diners provide the perfect space for both relaxation and entertaining. Fully equipped kitchens boast sleek, modern finishes, while stylish bathrooms add a touch of elegance. These apartments offer an ideal living environment for professionals seeking comfort and convenience.



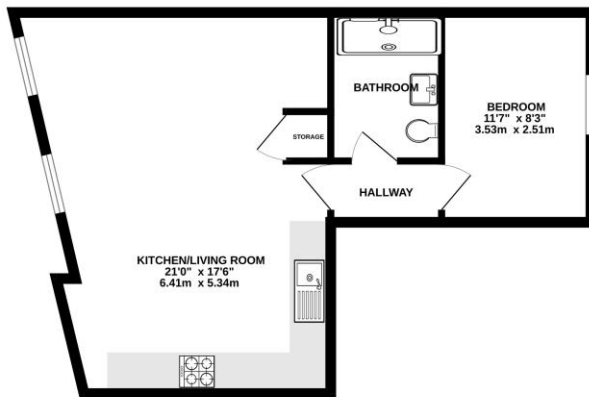




# FLOORPLANS – GROUND FLOOR

Plot 1

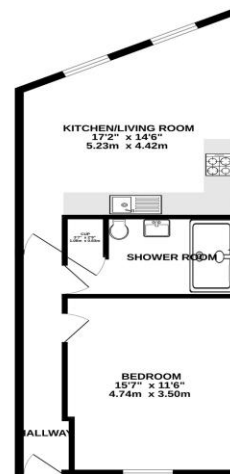
FLAT 1 GROUND FLOOR



Whilst every attempt has been made to ensure the accuracy of the floorplan contained herein, measurements of doors, windows, rooms and any other items are approximate and no responsibility is taken for any error, omission or misstatement. This plan is for illustrative purposes only and should be used as such to only prospective purchasers. The services, layout and appearance shown here has been noted and no guarantee as to their quality or efficiency can be given.  
Made with Metaphor CADD.

Plot 2

FLAT 2 GROUND FLOOR



Whilst every attempt has been made to ensure the accuracy of the floorplan contained herein, measurements of doors, windows, rooms and any other items are approximate and no responsibility is taken for any error, omission or misstatement. This plan is for illustrative purposes only and should be used as such to only prospective purchasers. The services, layout and appearance shown here has been noted and no guarantee as to their quality or efficiency can be given.  
Made with Metaphor CADD.

Plot 3

PLOT 3 GROUND FLOOR

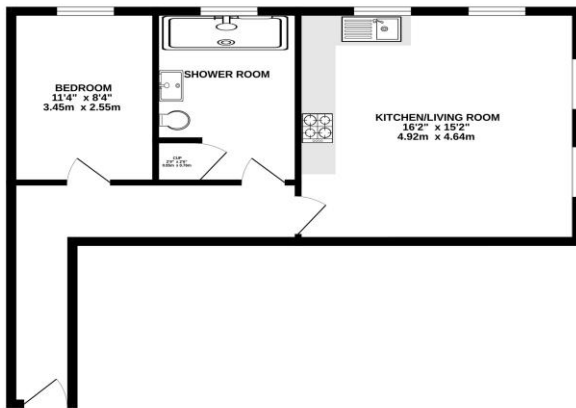


Whilst every attempt has been made to ensure the accuracy of the floorplan contained herein, measurements of doors, windows, rooms and any other items are approximate and no responsibility is taken for any error, omission or misstatement. This plan is for illustrative purposes only and should be used as such to only prospective purchasers. The services, layout and appearance shown here has been noted and no guarantee as to their quality or efficiency can be given.  
Made with Metaphor CADD.

# FLOORPLANS – FIRST FLOOR

Plot 4 and 10

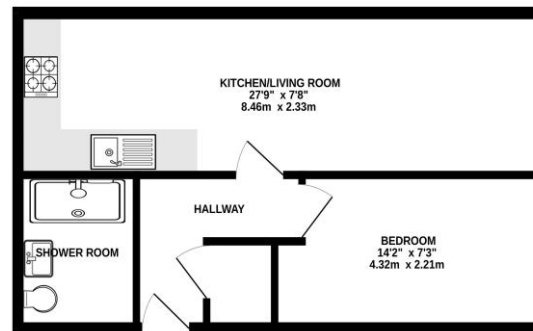
FLAT 4 & 10



Where every attempt has been made to ensure the accuracy of the floorplan contained herein, measurements of plots, sections, rooms and any other items are approximate and no responsibility is taken for any error, omission or misstatement. This plan is for illustrative purposes only and should be used as such by the prospective purchaser. The services, systems and appliances shown have not been tested and no guarantee as to their operability or efficiency can be given. Drawn with AutoCAD 2012.

Plot 5 and 11

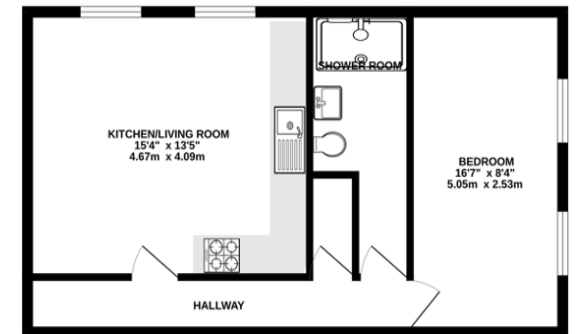
PLOT 5 & 11



Where every attempt has been made to ensure the accuracy of the floorplan contained herein, measurements of plots, sections, rooms and any other items are approximate and no responsibility is taken for any error, omission or misstatement. This plan is for illustrative purposes only and should be used as such by the prospective purchaser. The services, systems and appliances shown have not been tested and no guarantee as to their operability or efficiency can be given. Drawn with AutoCAD 2012.

Plot 6 and 12

PLOTS 6 AND 12



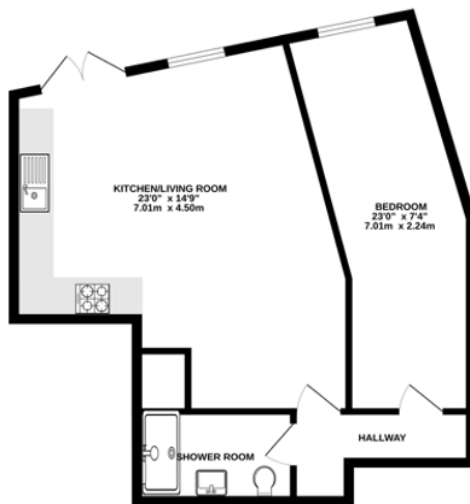
Where every attempt has been made to ensure the accuracy of the floorplan contained herein, measurements of plots, sections, rooms and any other items are approximate and no responsibility is taken for any error, omission or misstatement. This plan is for illustrative purposes only and should be used as such by the prospective purchaser. The services, systems and appliances shown have not been tested and no guarantee as to their operability or efficiency can be given. Drawn with AutoCAD 2012.



# FLOORPLANS – SECOND FLOOR

Plot 7 and 13

PLOTS 7 AND 13



While every attempt has been made to ensure the accuracy of the floorplan contained herein, measurements of areas, volumes, heights and any other data are approximate and no responsibility is taken for any errors, omissions or misstatements. This plan is for illustrative purposes only and should be used in conjunction with the prospectus. The layout, design and appearance shown here are not intended to be a guarantee of any particular design or appearance and are subject to change without notice.

Plot 8 and 14

PLOTS 8 AND 14



While every attempt has been made to ensure the accuracy of the floorplan contained herein, measurements of areas, volumes, heights and any other data are approximate and no responsibility is taken for any errors, omissions or misstatements. This plan is for illustrative purposes only and should be used in conjunction with the prospectus. The layout, design and appearance shown here are not intended to be a guarantee of any particular design or appearance and are subject to change without notice.

Plot 9 and 15

PLOTS 9 AND 15

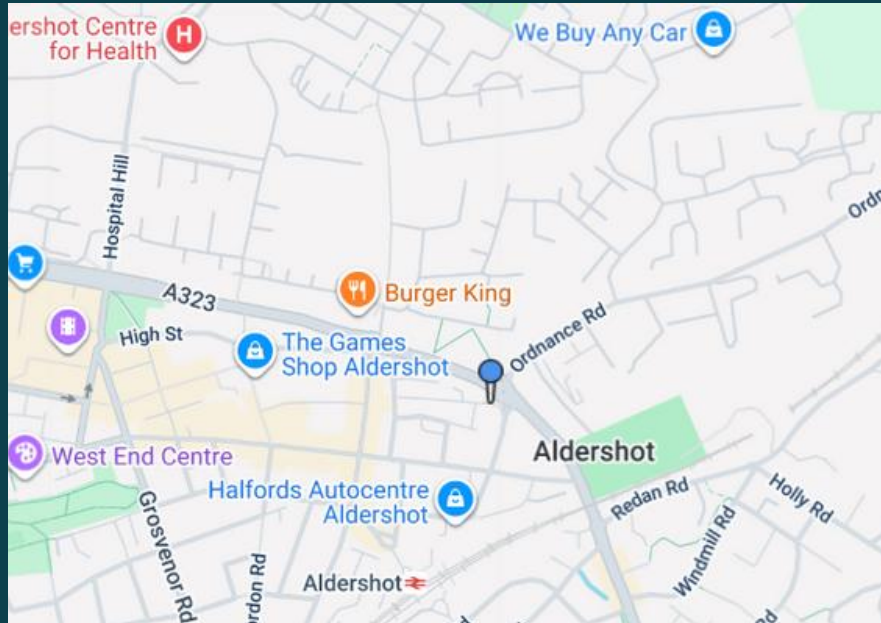


While every attempt has been made to ensure the accuracy of the floorplan contained herein, measurements of areas, volumes, heights and any other data are approximate and no responsibility is taken for any errors, omissions or misstatements. This plan is for illustrative purposes only and should be used in conjunction with the prospectus. The layout, design and appearance shown here are not intended to be a guarantee of any particular design or appearance and are subject to change without notice.





# LOCATION ALDERSHOT



Located in the heart of Aldershot, this exclusive gated development enjoys easy access to local amenities and excellent transport links. With the main train station a few minutes walk away and the A331 with links to the M3 Southampton to London and the A3 to Guildford.







#### ALDERSHOT

📞 Sales 01252 361501  
 📞 Lettings 01252 361555  
 📞 Platinum Homes 01252 975500



#### ASH VALE

📞 Sales 01252 324466  
 📞 Lettings 01252 361555  
 📞 Platinum Homes 01252 975500



#### BASINGSTOKE

📞 Sales 01256 880001  
 📞 Lettings 01256 880011  
 📞 Platinum Homes 01256 236236



#### BRACKNELL FOREST

📞 Sales 01344 962150  
 📞 Lettings 01344 962150  
 📞 Platinum Homes 01344 962160



#### FARNBOROUGH (Inc Land)

📞 Sales 01252 370001  
 📞 Lettings 01252 359887  
 📞 Platinum Homes 01252 975500



#### FARNHAM (Inc Land)

📞 Sales 01252 723723  
 📞 Lettings 01252 361555  
 📞 Platinum Homes 01252 975500



#### FLEET (Inc New Homes)

📞 Sales 01252 628800  
 📞 Lettings 01252 359887  
 📞 Platinum Homes 01252 975500



#### FRIMLEY

📞 Sales 01276 65100  
 📞 Lettings 01276 588100  
 📞 Platinum Homes 01276 749947



#### HOOK

📞 Sales 01256 769999  
 📞 Lettings 01256 769998  
 📞 Platinum Homes 01256 236236



#### CAMBERLEY

📞 Sales 01276 685544  
 📞 Lettings 01276 588100  
 📞 Platinum Homes 01276 749947



#### THE APARTMENT DEPARTMENT

📞 Sales 01252 361550  
 📞 Lettings 01252 361555



#### PLATINUM HOMES

📞 Sales 01252 975500  
 📞 Lettings 01252 975500

**CONTACT  
US TODAY**

📞 01252 361550

✉ [info@bridges.co.uk](mailto:info@bridges.co.uk)

**Bridges**  
 A P A R T M E N T  
 D E P A R T M E N T