



Two Bedroom Apartment

Exchange Close, Aldershot, Hampshire, GU11 2FD

Offers in excess of: £260,000

- Two Double Bedrooms
- First Floor Apartment
- Principal Bedroom With En Suite
- Light and Airy Space with a Juliette Balcony
- Allocated Parking
- Lift Access to All Floors
- Exclusive Development
- EPC: B (85)



Description

An exclusive development located in Exchange Close, a short walk from the mainline train station which provides direct access to London Waterloo. Upon entering the property, you are welcomed into a bright and spacious hallway, with all rooms leading off it. The open-plan lounge/dining area features a Juliette balcony. There is a principal bedroom with an en suite, an additional double bedroom, and a family bathroom. The property also benefits from lift access and is well-presented throughout. Bridges Estate Agents are pleased to offer this apartment to the market and highly recommend a viewing.

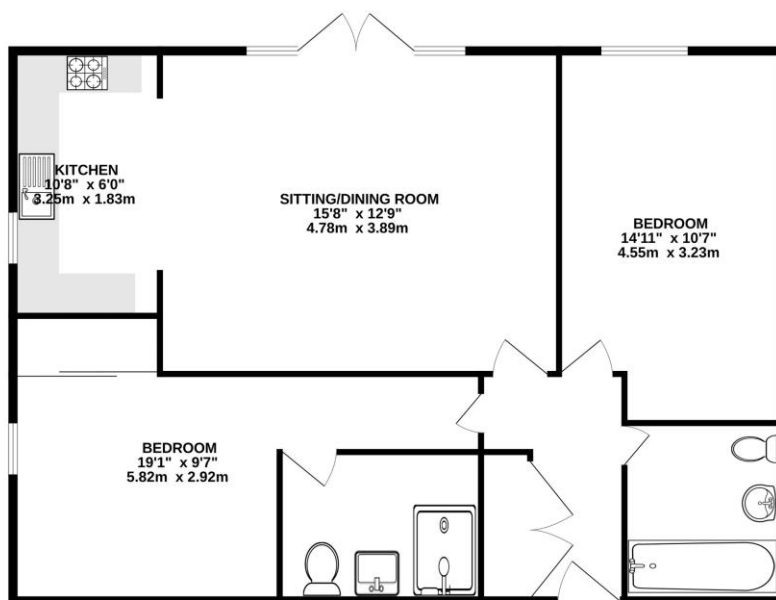
Outside

The property is part of an exclusive development and benefits from allocated parking.

To view the Material Information Certificate for this property please click [Here](#) or contact us to request a copy.

Floorplan

FIRST FLOOR



Whilst every attempt has been made to ensure the accuracy of the floorplan contained here, measurements of doors, windows, rooms and any other items are approximate and no responsibility is taken for any error, omission or mis-statement. This plan is for illustrative purposes only and should be used as such by any prospective purchaser. The services, systems and appliances shown have not been tested and no guarantee as to their operability or efficiency can be given.
Made with Metropix 02/25



TO ARRANGE A VIEWING PLEASE CONTACT:
Tel: **01252 361550** or Email: **info@bridges.co.uk**



Important Notice - These particulars are set out as a general outline only for the guidance of intended purchasers/tenants and do not form part of any offer or contract and must not be relied upon as statements or representations of fact. Purchasers/Tenants must satisfy themselves by inspection or otherwise as to their correctness.