



Three Bedroom Semi-Detached House Cripsey Road, Farnborough, Hampshire, GU14 9QA

Price: £375,000

- Three Double Bedrooms
- Two Reception Rooms
- Completed Chain
- Fitted Kitchen and Cloakroom
- Lean-To with Utility Space
- Private Garden
- Open Fields and Greenery
- EPC: D (65)



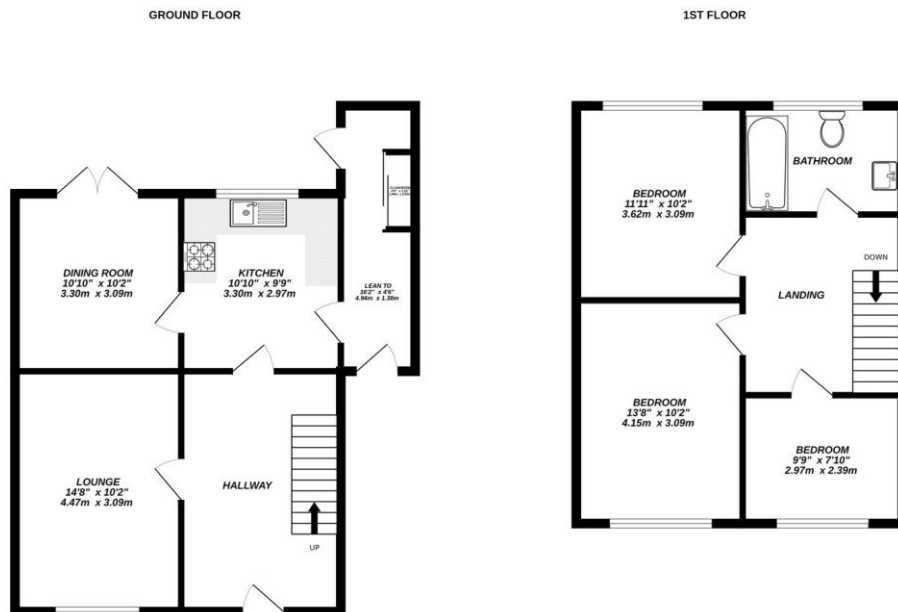
Description

Completed Chain This three-bedroom semi-detached home, set in the heart of Cove, is an ideal purchase for families. The ground floor features two bright and spacious reception rooms, with double doors from the dining room opening directly onto the garden. The kitchen is fitted with built-in appliances and offers ample worktop space, complemented by a generously sized entrance hall. Off the kitchen, a useful lean-to provides additional space that can be utilised as a utility area or as direct access to the garden, alongside a convenient downstairs cloakroom. Upstairs, there are two well-proportioned double bedrooms and a generous single, all served by a family bathroom. Early viewing is highly

Outside

The mature rear garden enjoys a high degree of privacy, backing onto open fields and featuring an array of established greenery — perfect for relaxing or entertaining. Ideally positioned, the property is within walking distance of highly regarded schools, local shops, pubs, and provides excellent access to the A331 and M3.

Floorplan



Made with Metroplex ©2025



TO ARRANGE A VIEWING PLEASE CONTACT:
Tel: **01252 361550** or Email: **info@bridges.co.uk**



Important Notice - These particulars are set out as a general outline only for the guidance of intended purchasers/tenants and do not form part of any offer or contract and must not be relied upon as statements or representations of fact. Purchasers/Tenants must satisfy themselves by inspection or otherwise as to their correctness.