



Two Bedroom Park Home

Hill Corner Farm Park, Sandy Lane, Farnborough, Hampshire, GU14

Price: £80,000

- Two Bedroom Park Home
- Family Bathroom
- UPVC Windows
- Recently Fitted Combi-Boiler
- Exclusively for Over 55's
- Parking Available
- Well Kept Wraparound Garden
- EPC: TBC



Description

This well-presented static park home offers bright and comfortable living, with a double aspect living room. The sociable kitchen/breakfast room is fitted with contemporary units and work surfaces and comes equipped with a free-standing gas oven with four ring hobs. There is ample space for dining furniture, a fridge/freezer, and plumbing for a washing machine, while a cupboard houses the gas combi boiler and new radiators throughout the property. The property includes a double bedroom with an excellent range of fitted storage, alongside a versatile second bedroom. A well-appointed bathroom with a Champagne suite completes the accommodation.

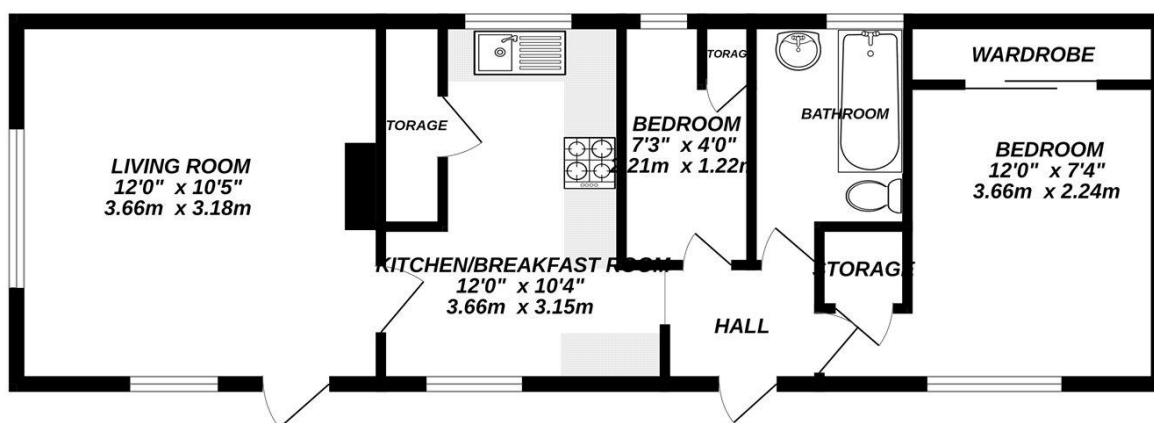
Outside

This well-presented park home is set within a retirement development, exclusively for the over 55s. The property benefits from well-maintained wraparound gardens, featuring paved stepping stones, a patio, and a useful garden shed plus green house. Mature shrubs and fencing provide a pleasant degree of privacy. Driveway parking for one car to the front of the property adding convenience and accessibility.

To view the Material Information Certificate for this property please click [Here](#) or contact us to request a copy.

Floorplan

GROUND FLOOR



Made with Metropix ©2025



TO ARRANGE A VIEWING PLEASE CONTACT:
Tel: **01252 361550** or Email: **info@bridges.co.uk**



Important Notice - These particulars are set out as a general outline only for the guidance of intended purchasers/tenants and do not form part of any offer or contract and must not be relied upon as statements or representations of fact. Purchasers/Tenants must satisfy themselves by inspection or otherwise as to their correctness.