



Two Bedroom Apartment

Jaguar Lane, Bracknell, Berkshire, RG12 9PE

Price: £290,000

- Two Double Bedrooms
- Modern First Floor Apartment
- Open Plan Living/Dining Room
- Modern Fully Integrated Kitchen
- Communal Grounds
- Allocated Parking Bay
- Attractive Communal Grounds
- EPC: B (82)



Description

This contemporary first floor apartment is superbly located within a short walk of Bracknell town centre, offering excellent access to shopping, dining, and leisure amenities. Transport links are excellent, with the Lexicon shopping and leisure complex and Bracknell Railway Station close by for smooth commuting via the M4/M3 and direct rail to London.

Step inside to discover a thoughtfully designed open plan living area, seamlessly combining lounge/dining room leading to the kitchen which offers modern fixtures, and integrated appliances elevate the sense of style.

The two generous double bedrooms are light and airy, with the main offering a modern en suite shower room and additional family bathroom. Externally there are generous visitors parking facilities and one allocated parking bay and communal grounds.

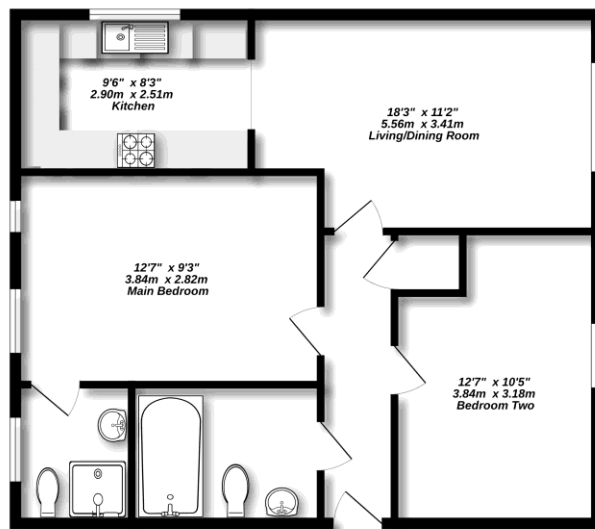
Outside

There are communal grounds with visitors parking and one allocated parking bay.

To view the Material Information Certificate for this property please click [Here](#) or contact us to request a copy

Floorplan

GROUND FLOOR



Made with Metropia 12025



TO ARRANGE A VIEWING PLEASE CONTACT:

Tel: **01344 962150** or Email:



Important Notice - These particulars are set out as a general outline only for the guidance of intended purchasers/tenants and do not form part of any offer or contract and must not be relied upon as statements or representations of fact. Purchasers/Tenants must satisfy themselves by inspection or otherwise as to their correctness.