



## One Double Bedroom End of Terrace Bungalow

**Leishman Views, Wellesley, Aldershot, Hampshire, GU11 4EW**

Price: £375,000

- One Double Bedroom
- Stunning Grade Two Listed Bungalow
- No Onward Chain
- Private Garden
- Luxurious Throughout
- Must be Seen to be Appreciated
- Open Plan Living
- EPC: D (66)



## Description

A unique opportunity to acquire part of local history. This stunning grade two listed property, previously forming part of the Cambridge Hospital, has been stylishly modernised to provide a contemporary blend to this Edwardian home. To the side of this home is the entrance, where you are met with a welcoming open plan reception room. The generously sized front living room, kitchen / dining room, with a sash bay window, a generous double bedroom and a beautiful bathroom. This home further benefits from a private garden & parking all overlooking picturesque views. Don't miss out to secure this luxurious home at this historic landmark Gun Hill is located just 0.7 miles from the train station, which offers direct links to London Waterloo, this beautiful home is also within walking distance of popular schools and Wellesley Nature Reserve.

## Outside

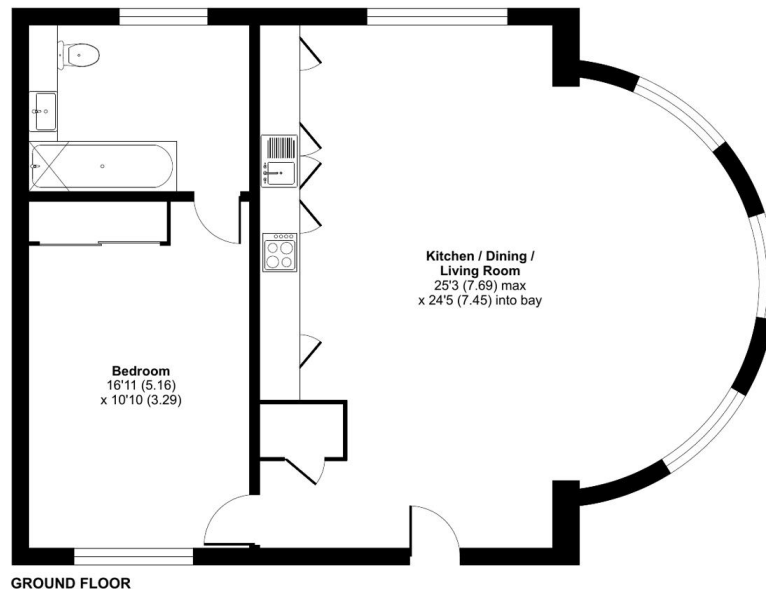
Located in the Grounds off the former Cambridge Hospital overlooking picturesque view, This luxurious Bungalow benefits from a private garden with a patio area and laid lawn

To view the Material Information Certificate for this property please click [Here](#) or contact us to request a copy

## Floorplan

### Leishman Views, Wellesley, Aldershot, GU11

Approximate Area = 816 sq ft / 75.8 sq m  
For identification only - Not to scale



Floor plan produced in accordance with RICS Property Measurement 2nd Edition, incorporating International Property Measurement Standards (IPMS2 Residential). © nitchecom 2025. Produced for Bridges Estate Agents. REF: 1334300



**TO ARRANGE A VIEWING PLEASE CONTACT:**  
Tel: **01252 361550** or Email: **info@bridges.co.uk**



Important Notice - These particulars are set out as a general outline only for the guidance of intended purchasers/tenants and do not form part of any offer or contract and must not be relied upon as statements or representations of fact. Purchasers/Tenants must satisfy themselves by inspection or otherwise as to their correctness.