



Three Bedroom Maisonette

Chapel Lane, Farnborough, Hampshire, GU14 9BG

Price: £285,000

- Three Bedrooms
- Ground Floor Maisonette
- Lounge Dining Room with Access to Garden
- Convenient Location
- Lounge Dining Room
- Drive Way Parking
- South Facing Rear Garden
- EPC: C (76)



Description

Offered to the market with no onward chain Chapel Lane is a spacious ground floor maisonette set within walking distance to a host of local amenities, bus links and a variety of convenience stores just around the corner.

Leading up to the property you will find ample driveway parking and a low maintenance garden area with side access to the rear garden.

The property compromises of three good sized bedrooms, a spacious main lounge, modern fitted kitchen and three piece bathroom suite.

Viewings are highly recommended and can be arranged with the Bridges Team.

Outside

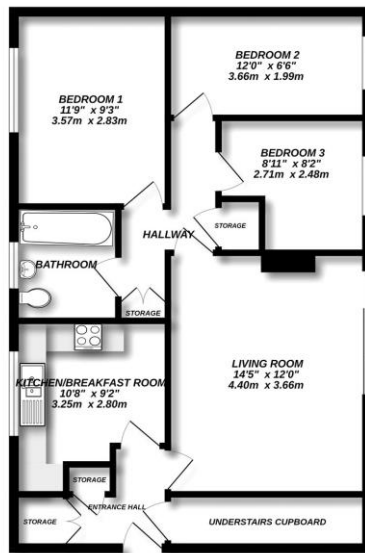
To the front of the property, you will find ample driveway parking and a low maintenance garden area.

The property benefits from a generous south facing rear garden with a good sized storage shed and plenty of room to enjoy the sunshine.

To view the Material Information Certificate for this property please click [Here](#) or contact us to request a copy

Floorplan

GROUND FLOOR



Made with Mergen C2025



TO ARRANGE A VIEWING PLEASE CONTACT:
Tel: 01252 361550 or Email: info@bridges.co.uk



Important Notice - These particulars are set out as a general outline only for the guidance of intended purchasers/tenants and do not form part of any offer or contract and must not be relied upon as statements or representations of fact. Purchasers/Tenants must satisfy themselves by inspection or otherwise as to their correctness.