



Three Bedroom Semi-Detached House

Farnborough, Hampshire, GU14 6LP

Price: £529,950

- Three Bedroom House
- Open Plan Kitchen/Diner/Living
- Integrated Appliances
- High Quality Finishes Throughout
- En Suite to Principal Bedroom
- Two Parking Spaces
- 10 Year Build Warranty
- EPC: TBC



Description

Lincoln Mews is an exclusive development comprising of just four luxury homes. This bespoke collection features two pairs of beautifully crafted semi detached houses, each thoughtfully designed to blend modern living with exceptional quality and style. Each home boasts a spacious open plan kitchen and living area on the ground floor perfect for family life and entertaining. The kitchens feature modern shaker-style cabinetry, premium integrated appliances, elegant stone worktops, and French doors opening onto sandstone paved patios and private gardens, offering seamless indoor-outdoor living.

Comfort Across Three Floors

Upstairs, the first floor presents a generous principal bedroom with en suite shower room, a second double bedroom, and a contemporary family bathroom.

On the top floor, a charming third bedroom offers flexibility as a guest suite, home office, or peaceful retreat.

Quality Craftsmanship Throughout

Attention to detail is evident in every finish from Amtico flooring and underfloor heating on the ground floor to plush carpets in the bedrooms. Bathrooms are designed with porcelain tiles, sleek vanity units, and large mirrors for a refined and luxurious feel.

Outside

There is a private enclosed rear garden laid to patio and lawn perfect for relaxing or entertaining. The gardens also have side access. To the front of the property are two parking spaces.

Floorplan



Denotes restricted head height

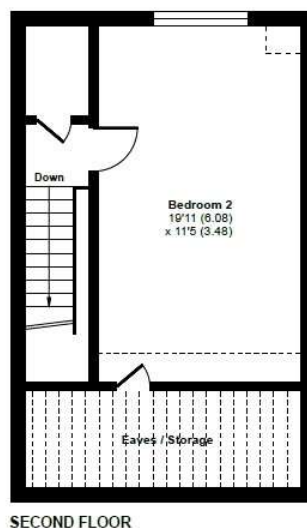
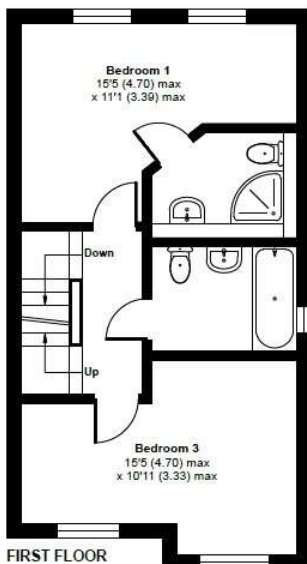
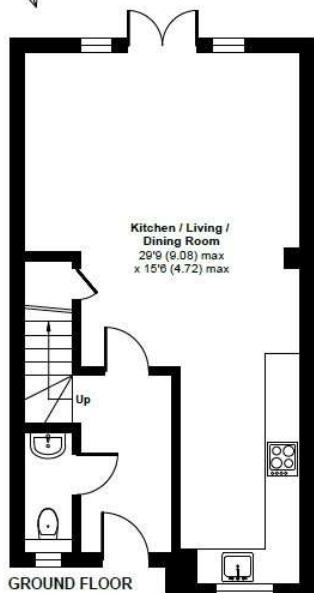
Park Road, Farnborough, GU14

Approximate Area = 1180 sq ft / 109.6 sq m

Limited Use Area(s) = 112 sq ft / 10.4 sq m

Total = 1292 sq ft / 120 sq m

For identification only - Not to scale



Floor plan produced in accordance with RICS Property Measurement 2nd Edition, incorporating International Property Measurement Standards (IPMS2 Residential). © richcom 2025. Produced for Bridges Estate Agents. REF: 1326714

Bridges
Estate Agents

Bridges
Estate Agents

TO ARRANGE A VIEWING PLEASE CONTACT:
Tel: **01252 361550** or Email: **info@bridges.co.uk**



Important Notice - These particulars are set out as a general outline only for the guidance of intended purchasers/tenants and do not form part of any offer or contract and must not be relied upon as statements or representations of fact. Purchasers/Tenants must satisfy themselves by inspection or otherwise as to their correctness.