



Three Bedroom Terraced House

Rydal Close, Farnborough, Hampshire, GU14 0JX

Guide Price: £385,000

- Three Bedrooms
- Modern Fitted Kitchen
- Parking
- South West Garden
- Popular Location
- Close to Playing Fields
- Close to Local Amenities
- EPC: D (57)



Description

A spacious three bedroom family home in a peaceful cul-de-sac location in the sought after Southwood within walking distance to Southwood Woodlands, playing fields, schools and the Morisons Supermarket.

To the ground floor the property offers a spacious entrance hallway with a cloakroom and continuing to a generous lounge/diner providing access out to the garden and a separate kitchen area that has been tastefully design by the current owners creating a sleek and modern space for family cooking. Upstairs the property boasts two double bedrooms and a spacious third bedroom overlooking the garden with bedroom one benefitting from built-in wardrobes and a landing with ample storage and a three piece family bathroom.

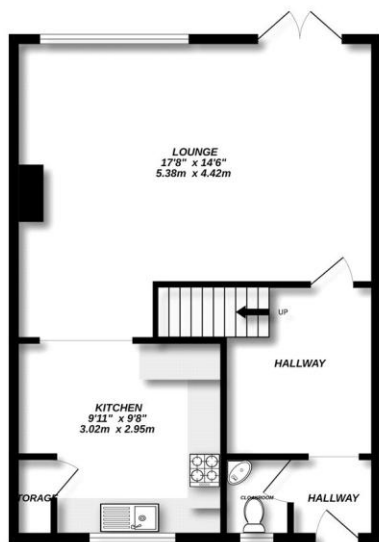
Outside

To the front of the property the current owners have created a generous parking area leading up to the property.

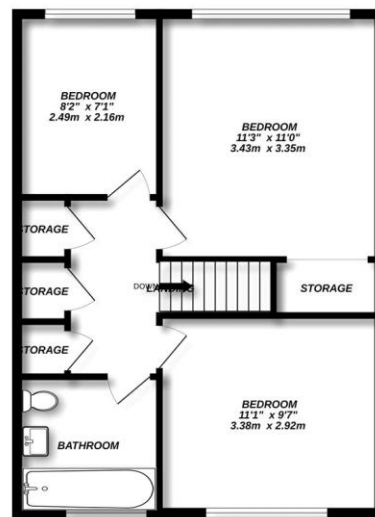
To the rear is a good sized space benefiting from. Being positioned in a south westerly aspect the garden is a perfect space for entertaining or enjoying the sunshine.

Floorplan

GROUND FLOOR



1ST FLOOR



Made with Metropix ©2025



TO ARRANGE A VIEWING PLEASE CONTACT:
Tel: **01252 361550** or Email: **info@bridges.co.uk**



Important Notice - These particulars are set out as a general outline only for the guidance of intended purchasers/tenants and do not form part of any offer or contract and must not be relied upon as statements or representations of fact. Purchasers/Tenants must satisfy themselves by inspection or otherwise as to their correctness.