

## Two Bedroom Ground Floor Apartment

**Woodland Glade, Mytchett, Camberley, Surrey, GU16 6GY**

Price: £315,000

- Two Double Bedrooms Ground Floor Apartment
- 100% Shared Ownership
- Open-Plan Living Space
- Private Patio
- Allocated Parking
- EV Charging Point
- Communal Garden
- EPC: B (84)



## Description

This is a shared ownership property with a value based upon 100% share price. There is an option to purchase this property at its full 65% price. This beautifully presented two-bedroom ground floor apartment offering over 750 sq ft of modern living in the exclusive Waters Edge development.

The apartment features a bright open-plan kitchen, dining and living space with French doors opening to a private patio and allocated parking. The main bedroom is generously sized, while the second double makes an ideal guest room or home office. A sleek bathroom with modern finishes completes the interior.

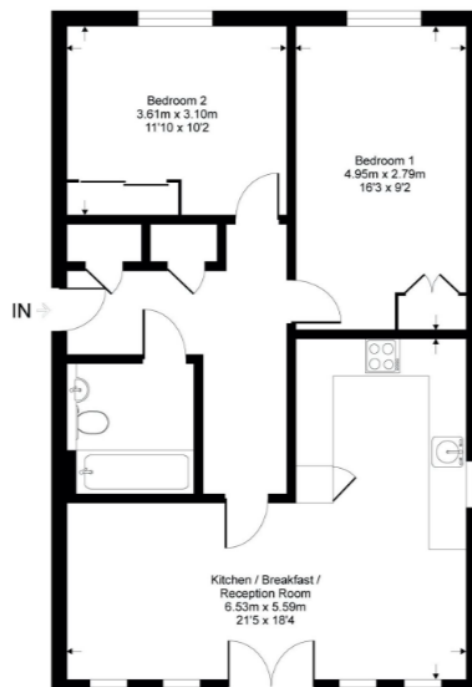
Additional benefits include ample storage, gas central heating, double glazing, secure entry system, a communal garden and an EV charging point next to the front door.

Perfect for first-time buyers, downsizers or investors, this turnkey home offers style, comfort and convenience in equal measure. Please note this property can be purchased at 65% also and all buyers will be accepted subject to meeting criteria.

## Outside

To the front of the property you will find a communal garden and an EV charging point next to the front door

## Floorplan



**TO ARRANGE A VIEWING PLEASE CONTACT:**  
Tel: **01252 361550** or Email: **info@bridges.co.uk**



Important Notice - These particulars are set out as a general outline only for the guidance of intended purchasers/tenants and do not form part of any offer or contract and must not be relied upon as statements or representations of fact. Purchasers/Tenants must satisfy themselves by inspection or otherwise as to their correctness.