



## Two Bedroom Terraced House

**Newnham Road, Hook, Hampshire, RG27 9LU**

**Price: £450,000**

- Two Double Bedrooms
- Bonus Loft Room
- Block Paved Driveway
- Character Features Throughout
- Bay Fronted Sitting Room
- 100ft Rear Garden
- No Onward Chain
- EPC: E (42)





## Description

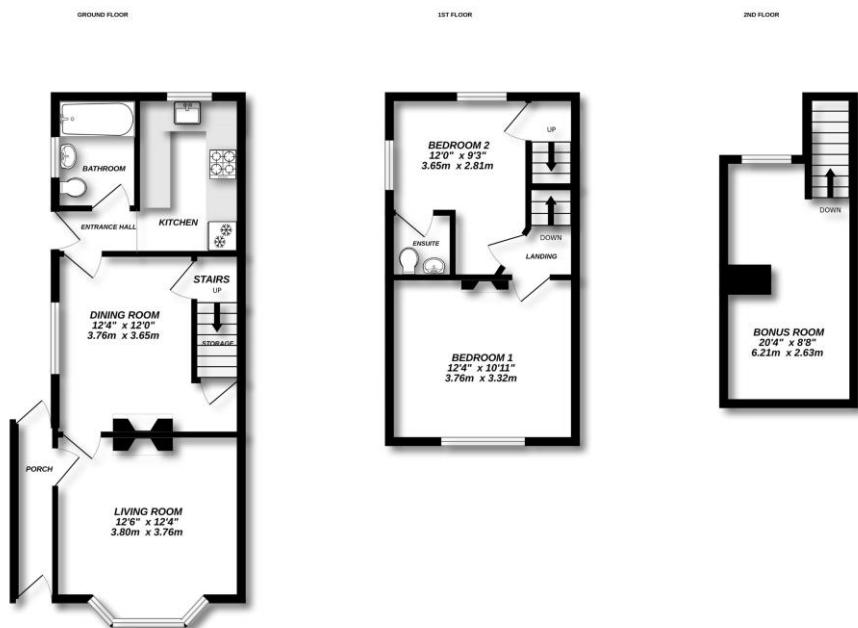
This delightful Victorian mid terrace cottage, dating back to 1887, is filled with character and charm throughout. The entrance hall leads to a stylish ground floor bathroom and a thoughtfully designed kitchen fitted with solid wood worktops, a Belfast sink, and a full range of integrated appliances. The heart of the home lies in the inviting dining room, where a beautiful open brick fireplace with timber mantle adds a warm focal point, complemented by solid oak flooring and sash windows. The sitting room to the front features a bay window and exposed oak beam, allowing natural light to pour in while highlighting the period detailing. Upstairs, the main bedroom enjoys a lovely Victorian style fireplace and coved ceilings, while the second bedroom has its own en suite toilet and basin. A staircase leads up to a charming bonus room in the loft, complete with a rear facing window, ideal for occasional use or as a quiet study.

## Outside

Set on the ever popular Newnham Road, the property enjoys an attractive outlook over a green and is just a short walk from the village centre, with its range of shops, amenities and the mainline railway station. The rear garden stretches close to 100ft, beginning with a paved terrace and flowing into a generous lawn with a pathway that leads to a raised decking area at the far end, perfect for outdoor dining. Mature hedging and fencing provide a sense of seclusion, while the front of the home benefits from off street parking on a smart block paved driveway. With additional access to the rear via a side gate and offered with no onward chain, this is a rare opportunity in a sought after setting.

To view the Material Information Certificate for this property please click [Here](#) or contact us to request a copy

## Floorplan



Made with Metropix ©2025



TO ARRANGE A VIEWING PLEASE CONTACT:  
Tel: **01256 769999** or Email: **info@bridges.co.uk**



Important Notice - These particulars are set out as a general outline only for the guidance of intended purchasers/tenants and do not form part of any offer or contract and must not be relied upon as statements or representations of fact. Purchasers/Tenants must satisfy themselves by inspection or otherwise as to their correctness.