



CAVALIER ROAD | OLD BASING


**Platinum
Homes**
BY BRIDGES



The Property

This spacious home on Cavalier Road in the heart of Old Basing impresses with its scale and versatility. Thoughtfully extended by the current owners, it offers a two-storey layout ideal for modern family living, just a stone's throw from local schools.

The entrance hall leads to an open-plan kitchen and dining area, the heart of the home. With a central island, integrated appliances, and twin skylights, the space is bright and practical, opening directly onto the rear garden. The living room mirrors the kitchen's proportions, stretching over seven metres and connecting to the patio and lawn through bi-fold doors, with a fireplace as a welcoming focal point.

Also on the ground floor is a fourth bedroom, currently used as a home office and gym, alongside a utility room with excellent storage and a convenient shower room.

Upstairs, the main bedroom features a modern en-suite with a double shower, while two further double bedrooms are served by a family bathroom and a family bathroom with a double shower, offering flexibility for guests or a growing household.

Outside

The rear garden enjoys a southerly aspect, landscaped for family life with a patio, raised planters, and a lawn.

A pathway leads to a detached double garage and additional parking, accessed via Belle Vue Road, providing extra space for vehicles or a workshop.





Features

- Four Bedrooms
- Three Bathrooms
- Open Plan Living
- Southerly Aspect
- Double Garage
- Ample Parking
- Close to Local Schools
- EPC: D (65)
- Council Tax Band: E

Contact

Philip Gascoyne

pgascoyne@platinumbybridges.co.uk

01252 975501


**Platinum
Homes**
BY BRIDGES



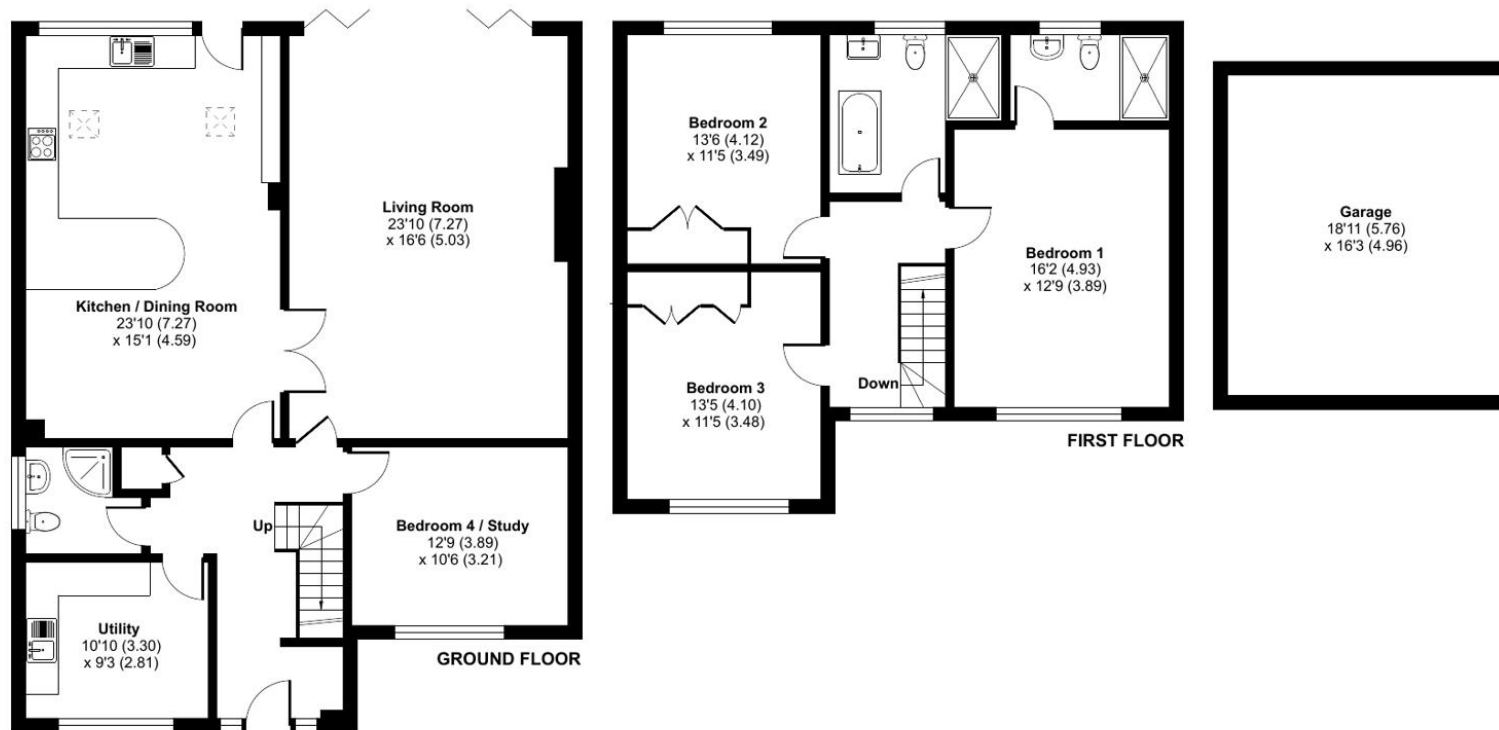
Cavalier Road, Old Basing, Basingstoke, RG24

Approximate Area = 1988 sq ft / 184.6 sq m

Garage = 308 sq ft / 28.6 sq m

Total = 2296 sq ft / 213.2 sq m

For identification only - Not to scale



Floor plan produced in accordance with RICS Property Measurement Standards incorporating International Property Measurement Standards (IPMS2 Residential). © nichecom 2024.
Produced for Bridges Estate Agents Ltd (Platinum Homes). REF: 1088477

**Platinum
Homes**
BY BRIDGES

Important Notice - These particulars are set out as a general outline only for the guidance of intended purchasers and do not form part of any offer or contract and must not be relied upon as statements or representations of fact. Purchasers must satisfy themselves by inspection or otherwise as to their correctness.

