

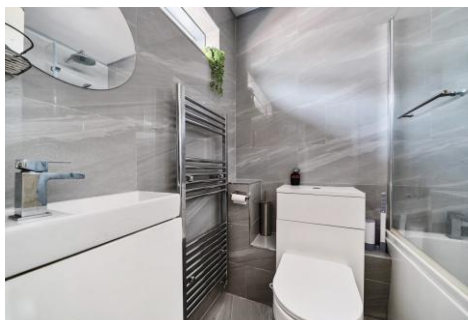


## One Double Bedroom Maisonette

**Liscombe, Bracknell, Berkshire, RG12 7DE**

Price: £195,000

- One Bedroom Maisonette
- Refitted Kitchen
- Refitted Bathroom
- Local Amenities Walking Distance
- Perfect for First Time Buyers
- Long Lease
- Central Heating
- EPC: C (69)



## Description

Located just a short distance from Birch Hill shops and South Hill Park, this well maintained one bedroom first floor maisonette offers comfortable and modern living in a popular area. The property has been carefully looked after by the current owner and benefits from an elevated position, providing pleasant open views from both the reception room and bedroom towards South Hill Park. The layout has been designed to make the most of the available space, with a focus on open plan living with central heating installed. The kitchen offers good storage and flows into the bright reception room, which benefits from high ceilings and plenty of natural light. The bedroom is a good size, with space for storage and furniture. Off the entrance hall, there is a refitted bathroom and a useful utility cupboard. An added benefit is the bonus room, currently used as a guest room but also suitable as a home office or for extra storage. This property would suit first time buyers, investors, or anyone looking for low maintenance living in a well-connected location.

## Outside

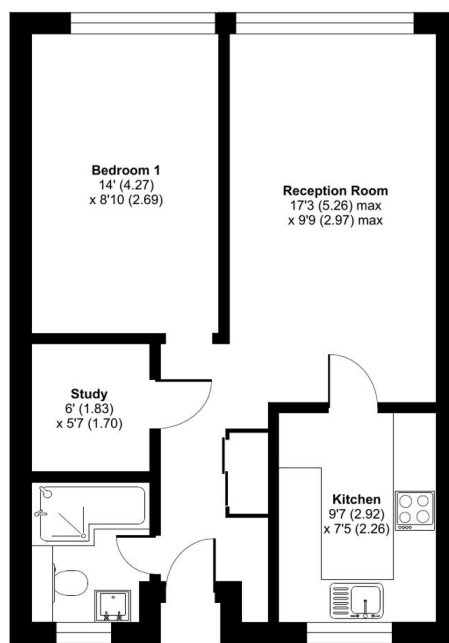
There is parking located to rear of the property and located above Birch Hill shops.

To view the Material Information Certificate for this property please click [Here](#) or contact us to request a copy.

## Floorplan

### Liscombe, Bracknell, Berkshire, RG12

Approximate Area = 516 sq ft / 48 sq m  
For identification only - Not to scale



FIRST FLOOR

Floor plan produced in accordance with RICS Property Measurement 2nd Edition, incorporating International Property Measurement Standards (IPMS2 Residential). © ntlhcom 2025. Produced for Bridges Estate Agents. REF: 1327005



TO ARRANGE A VIEWING PLEASE CONTACT:

Tel: **01344 962150** or Email:



Important Notice - These particulars are set out as a general outline only for the guidance of intended purchasers/tenants and do not form part of any offer or contract and must not be relied upon as statements or representations of fact. Purchasers/Tenants must satisfy themselves by inspection or otherwise as to their correctness.