



Two Bedroom Apartment

Lancaster Drive, Camberley, Surrey, GU15 3HY

Guide Price: £280,000

- Two Double Bedrooms
- Executive Apartment
- En Suite and Refitted Bathroom
- Refitted Kitchen
- Second Floor
- Allocated Parking
- Camberley Town Centre
- EPC: C (76)



Description

A well-presented and spacious two-bedroom top floor apartment located in a quiet cul-de-sac location within walking distance of Camberley town centre. The property benefits from many improvements by the current owners as well as allocated parking and communal garden space. The accommodation comprises a spacious living/dining room, separate refitted kitchen, two double bedrooms with the main bedroom boasting fitted wardrobes and an en suite shower room, and a refitted bathroom. Property has loft access.

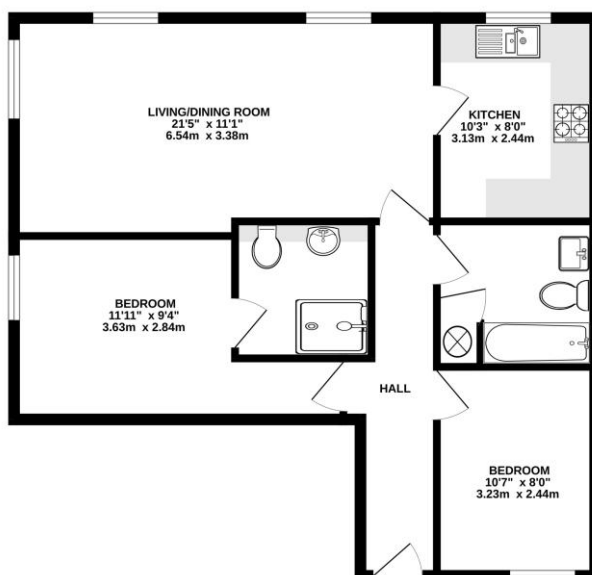
Outside

Externally the property benefits from communal garden space to the side of the property as well as communal drying area and allocated parking.

To view the Material Information Certificate for this property, please click [Here](#) or contact us to request a copy.

Floorplan

SECOND FLOOR



Whilst every attempt has been made to ensure the accuracy of the floorplan contained herein, measurements of all doors, windows, rooms and any other details are approximate and no responsibility is taken for any error, omission or mis-statement. This plan is for illustrative purposes only and should be used as such by any prospective purchaser. The accuracy, completeness and reliability of the information is not guaranteed and no guarantee is given as to their accuracy or efficiency can be given. Made with Metaphor 10/20/20



TO ARRANGE A VIEWING PLEASE CONTACT:

Tel: **01276 685544** or Email:

camberley@bridges.co.uk



Important Notice - These particulars are set out as a general outline only for the guidance of intended purchasers/tenants and do not form part of any offer or contract and must not be relied upon as statements or representations of fact. Purchasers/Tenants must satisfy themselves by inspection or otherwise as to their correctness.