



## Two Bedroom Terraced House

**Pound Meadow, Sherfield-on-Loddon, Hook, Hampshire, RG27 0EP**

Price: £335,000

- Two Bedroom Terraced Home
- Versatile Garden Room
- Private Rear Garden
- Allocated Parking Space
- Village Centre Location
- Excellent Road Links
- Ideal First-Time Buy
- EPC: D (68)



## Description

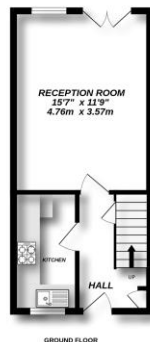
This two-bedroom mid-terrace home offers a warm and inviting feel from the moment you step inside. The lounge provides a comfortable space for relaxing or entertaining, while the kitchen is well laid out with an oven and hob included. Upstairs, two generously proportioned bedrooms and a bathroom create a practical and easy-to-live-in layout, making this a great choice for first-time buyers or anyone looking for a home that is both comfortable and manageable.

## Outside

The rear garden is a standout feature, with a versatile garden room that can be used as a studio, home office, gym or playroom. Double doors at the front open onto the garden, while a rear door leads to the garden gate giving direct access to the path behind the property for added practicality. There is also a private parking space at the front. Situated in the heart of Sherfield-on-Loddon, the property is within easy reach of village amenities, and the M3 and M4 are close by for effortless travel further afield. This is a home that blends the charm of village living with modern convenience.

To view the Material Information Certificate for this property please click [Here](#) or contact us to request a copy.

## Floorplan



Made with Holografi 12025



TO ARRANGE A VIEWING PLEASE CONTACT:  
Tel: **01256 769999** or Email: **info@bridges.co.uk**



Important Notice - These particulars are set out as a general outline only for the guidance of intended purchasers/tenants and do not form part of any offer or contract and must not be relied upon as statements or representations of fact. Purchasers/Tenants must satisfy themselves by inspection or otherwise as to their correctness.