



One Bedroom End of Terrace House

Bucklebury, Bracknell, Berkshire, RG12 7YJ

Price: £235,000

- One Dual Aspect Bedroom
- Modernised Two Story Maisonette
- Dual Aspect Living Room
- Refitted Kitchen
- Enclosed Front Garden
- Garage with Storage Area
- Cul-de-Sac Location
- EPC: D (65)



Description

This beautifully presented maisonette offers stylish and comfortable living across two well designed floors. Recently updated, the home features a refitted modern kitchen and a contemporary bathroom, both finished to a high standard. The spacious layout includes bright and airy living areas, perfect for relaxing or entertaining. Outside, you'll find your own enclosed private garden, ideal for summer barbecues, gardening, or simply unwinding in the fresh air. The property also benefits from a private garage, providing secure parking or additional storage.

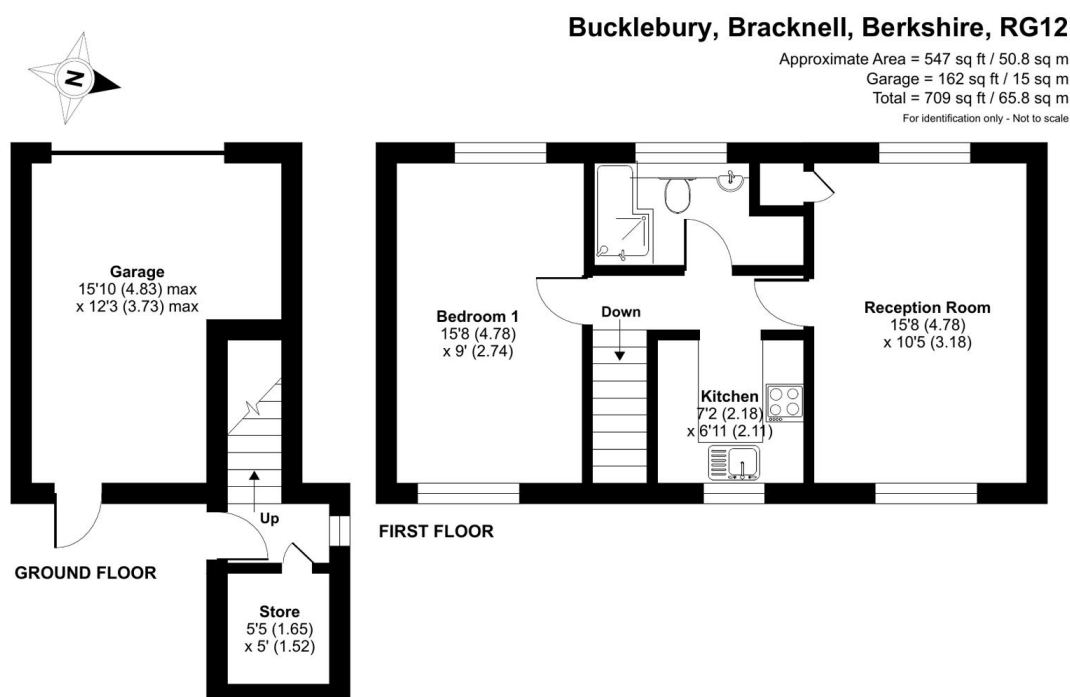
Nestled in a desirable location, this charming home combines modern convenience with a warm, welcoming feel, perfect

Outside

Outside the property features an enclosed wild front garden.

To view the Material Information Certificate for this property, please click [Here](#) or contact us to request a copy.

Floorplan



Floor plan produced in accordance with RICS Property Measurement 2nd Edition, incorporating International Property Measurement Standards (IPMS2 Residential). © nitchcom 2025. Produced for Bridges Estate Agents. REF: 1328531

Bridges
CO., LTD.

Bridges

TO ARRANGE A VIEWING PLEASE CONTACT:

Tel: 01344 962150 or Email:



Important Notice - These particulars are set out as a general outline only for the guidance of intended purchasers/tenants and do not form part of any offer or contract and must not be relied upon as statements or representations of fact. Purchasers/Tenants must satisfy themselves by inspection or otherwise as to their correctness.