

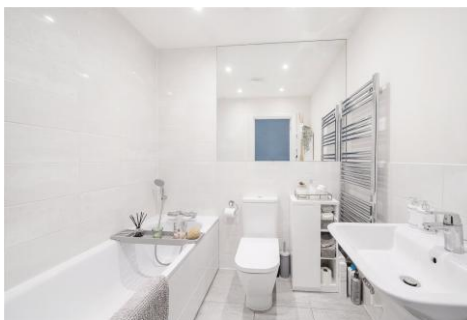


Two Bedroom Terraced House

Elizabeth Bree Close, Ash, Surrey, GU12 6FR

Offers Over: £375,000

- Two Bedroom Home Built In 2020
- Media Wall
- Downstairs Cloakroom and En suite
- South Facing Garden
- Allocated Parking Plus Visitors Spaces
- Immaculate Condition Throughout
- Integrated Kitchen Appliances
- EPC: B (85)



Description

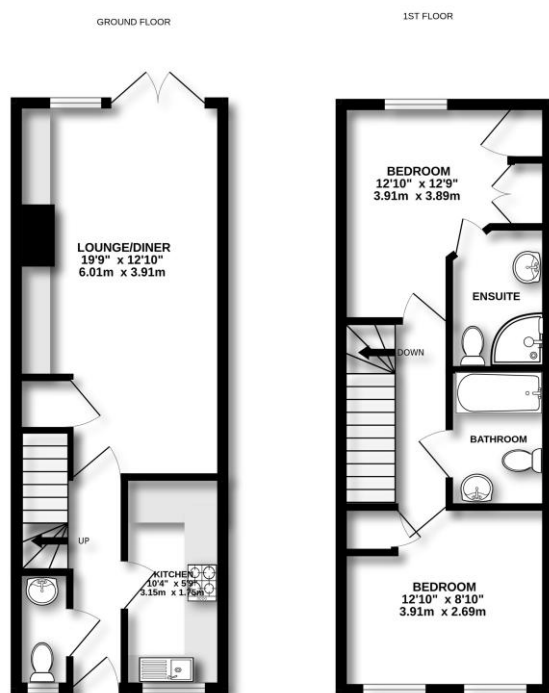
This stunning two bedroom house is located in a quiet cul-de-sac in Ash and is offered to the market in immaculate condition throughout. Only built in 2020, the current owners have improved the property significantly with beautiful decoration, smart panelling and a high spec media wall in the living room. This home is situated in one of the best places within the development fronting onto greenery and still has five year remaining of its NHBC guarantee. The ground floor comprises a spacious entrance hall, a cloakroom and a kitchen with integrated appliances (including fridge/freezer, dishwasher and washing machine).

Outside

Externally, the front offers a parking space plus visitors parking as well as an outside tap. The rear garden is south facing and beautifully presented. A smart patio area leads to lawn as well as a storage shed. The rear private access is gated, and all wood panels are in perfect condition.

To view the Material Information Certificate for this property please click [Here](#) or contact us to request a copy

Floorplan



Measurements are approximate. Not to scale. Illustrative purposes only.
Made with Metriqon 10/2025



TO ARRANGE A VIEWING PLEASE CONTACT:
Tel: **01252 361550** or Email: **info@bridges.co.uk**



Important Notice - These particulars are set out as a general outline only for the guidance of intended purchasers/tenants and do not form part of any offer or contract and must not be relied upon as statements or representations of fact. Purchasers/Tenants must satisfy themselves by inspection or otherwise as to their correctness.