



## Two Bedroom Terraced House

**Longmoor Court, Fleet, Hampshire, GU51 1AD**

**Price: £360,000**

- Two Bedrooms
- Four Piece Bathroom
- Living/Dining Room
- Parking and Garage
- Elvetham Heath Location
- No Onward Chain
- Allocated Parking and Garage
- EPC: D (62)





## Description

Tucked away in Elvetham Heath, this fantastic two-bedroom home. Benefiting from a kitchen in good condition, before a spacious living/dining room with sliding doors out to the private rear garden.

Upstairs, both bedrooms are double rooms, with big windows, with one of the bedrooms benefiting from built-in wardrobes.

The family bathroom has been improved, making it a four piece with both a bath and a shower.

## Outside

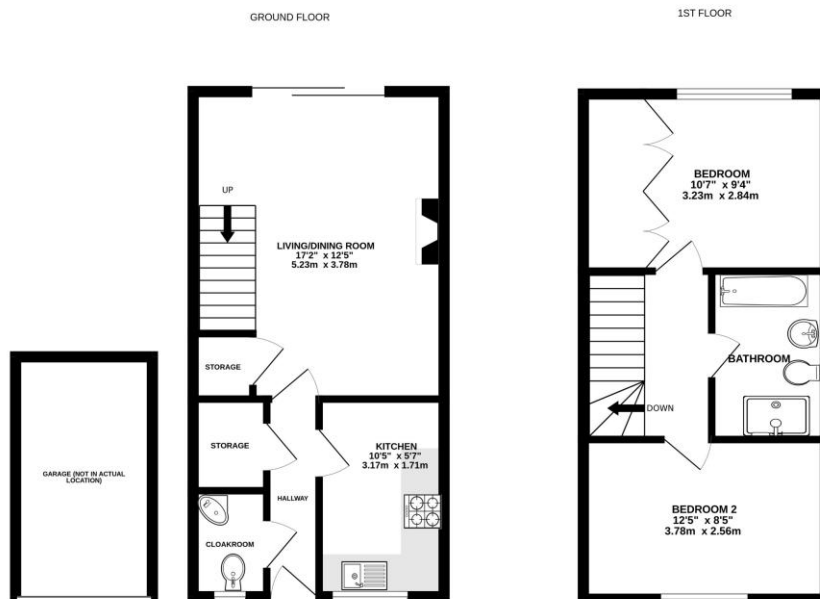
Located in Elvetham Heath, a popular estate, which falls into the catchment of popular schools such as Elvetham Heath Primary School and Calthorpe Secondary School. The estate also benefits from the Nature Reserve, Morrisons, and a popular pub.

The property itself is tucked away in Longmoor Court, boasting a sizeable rear garden, which is currently set up for entertaining, with seated areas at the front and back, with a patio and a barked area.

There is rear gate access, leading you to the car park, with the property boasting both allocated parking and a garage.

To view the Material Information Certificate for this property please click [Here](#) or contact us to request a copy.

## Floorplan



Whilst every attempt has been made to ensure the accuracy of the floorplan contained here, measurements of doors, windows, rooms and any other items are approximate and no responsibility is taken for any error, omission or mis-statement. This plan is for illustrative purposes only and should be used as such by any prospective purchaser. The services, systems and appliances shown have not been tested and no guarantee as to their operability or efficiency can be given.  
Made with Metropac ©2025



TO ARRANGE A VIEWING PLEASE CONTACT:  
Tel: **01252 361550** or Email: **info@bridges.co.uk**



Important Notice - These particulars are set out as a general outline only for the guidance of intended purchasers/tenants and do not form part of any offer or contract and must not be relied upon as statements or representations of fact. Purchasers/Tenants must satisfy themselves by inspection or otherwise as to their correctness.