



Two Bedroom Apartment

Markham Court, Camberley, Surrey, GU15 3HJ

Guide Price: £220,000

- Two Bedroom
- Executive Apartment
- First Floor
- En Suite
- Family Bathroom
- Allocated Parking
- Camberley Town Centre
- EPC: C (78)



Description

Offered to the market is this well-presented two-bedroom first floor executive apartment located in a quiet cul-de-sac within walking distance of Camberley town centre. The property benefits from an en suite and family bathroom as well as allocated parking plus a share of visitor spaces. The accommodation comprises a spacious living/dining room, separate kitchen, principal bedroom with fitted wardrobes and an en suite shower room, plus a further bedroom and a family bathroom.

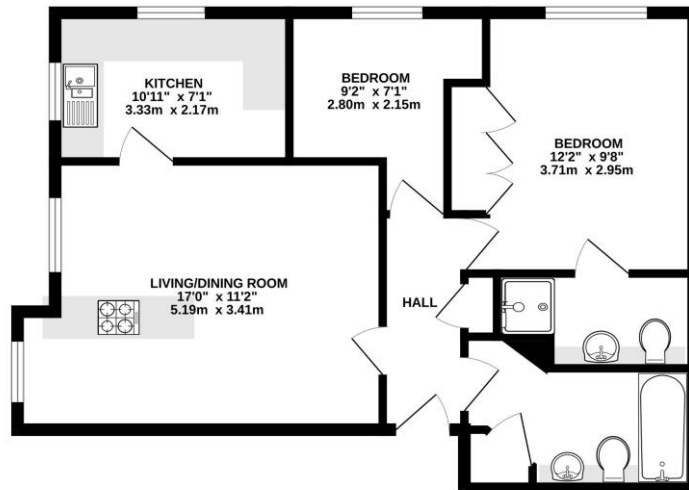
Outside

Externally the property benefits from one allocated parking space as well as a share of visitor parking too.

To view the Material Information Certificate for this property please click [Here](#) or contact us to request a copy.

Floorplan

FIRST FLOOR



Whilst every attempt has been made to ensure the accuracy of the floorplan contained herein, measurements of doors, windows, rooms and any other items are approximate and no responsibility is taken for any error, omission or mis-statement. This plan is for illustrative purposes only and should be used as such by any prospective purchaser. The services, systems and appliances shown have not been tested and no guarantee as to their operability or efficiency can be given.
Made with Metreplan 10/02/20



TO ARRANGE A VIEWING PLEASE CONTACT:

Tel: **01276 685544** or Email:

camberley@bridges.co.uk



Important Notice - These particulars are set out as a general outline only for the guidance of intended purchasers/tenants and do not form part of any offer or contract and must not be relied upon as statements or representations of fact. Purchasers/Tenants must satisfy themselves by inspection or otherwise as to their correctness.