



## Two Bedroom Terraced House

**Breach Gardens, Sherfield-on-Loddon, Hook, Hampshire, RG27 0AW**

**Price: £370,000**

- Two Bedrooms
- Terraced Home
- Two Allocated Parking Spaces
- No Onward Chain Complications
- Popular Village Location
- En Suite to Bedroom One
- Downstairs Cloakroom
- EPC: C (76)





## Description

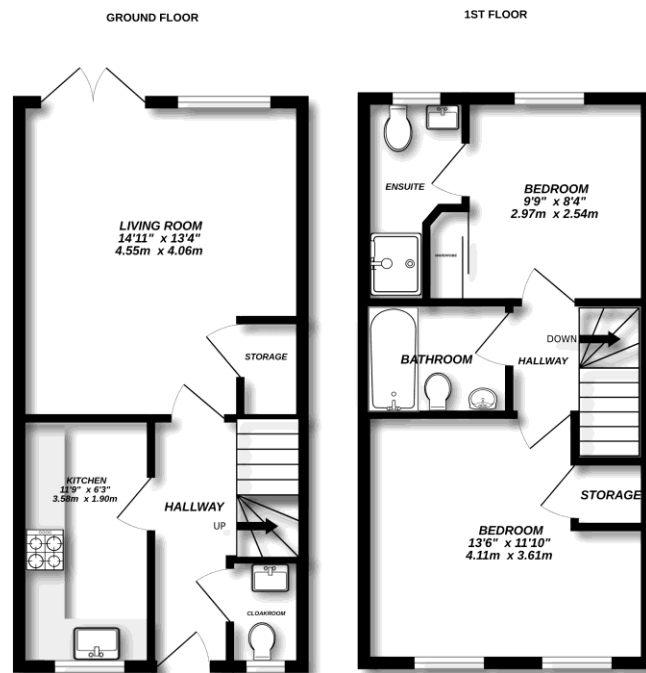
Offered to the market, with no onward chain, is this beautifully presented two-bedroom terraced home which is ideal for first-time buyers, downsizers, or investors alike. Located in a sought-after village of Sherfield-On-Loddon, the property enjoys a bright, airy feel throughout and offers both style and practicality. To the front of the home, you'll find a contemporary kitchen complete with integrated appliances, while a separate cloakroom off the hallway adds convenience. At the rear, the spacious open-plan living/dining area benefits from built-in storage and patio doors leading to a private, south-facing garden, perfect for relaxing or entertaining. Upstairs, there are two well-proportioned double bedrooms, both featuring built-in wardrobes. The principal bedroom is enhanced by a modern en suite, and there's also a stylish family bathroom serving the second bedroom.

## Outside

The property benefits from two allocated parking spaces to the front, with a south-facing, private and enclosed rear garden. The garden is mostly laid to lawn, with an area of patio, as well as a shed, and rear access.

To view the Material Information Certificate for this property please click [Here](#) or contact us to request a copy

## Floorplan



Made with Metropix ©2025



**TO ARRANGE A VIEWING PLEASE CONTACT:**  
 Tel: **01256 769999** or Email: **info@bridges.co.uk**



Important Notice - These particulars are set out as a general outline only for the guidance of intended purchasers/tenants and do not form part of any offer or contract and must not be relied upon as statements or representations of fact. Purchasers/Tenants must satisfy themselves by inspection or otherwise as to their correctness.