



Two Bedroom Terraced House

Pound Meadow, Sherfield-on-Loddon, Hook, Hampshire, RG27 0EP

Guide Price: £325,000

- Two Bedroom
- Terraced Home
- Allocated Parking
- No Onward Chain Complications
- Popular Village Location
- Enclosed Rear Garden
- Modern Home
- EPC: D (68)



Description

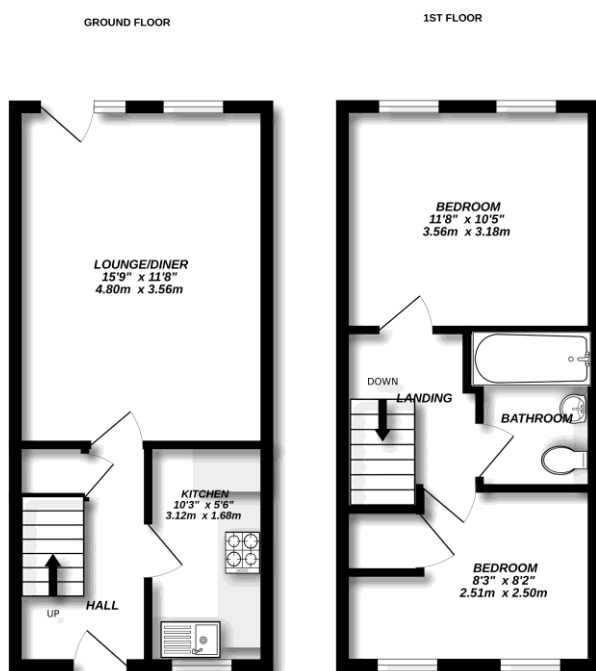
Offered to the market with no onward chain is this well presented two bedroom terraced home which is perfect for first time buyers, downsizers, or investors looking for a low maintenance property in a convenient location. The ground floor features a bright and modern kitchen situated at the front of the home, while to the rear you'll find a spacious open plan living/dining area with patio doors leading out to the enclosed rear garden, ideal for outdoor entertaining or relaxing. Additional storage is available in the handy downstairs cupboard. Upstairs, the property offers two generously sized double bedrooms, one of which has an airing cupboard, along with a stylish family bathroom. The property offers a light and airy feel throughout.

Outside

The property benefits from an allocated parking space to the front, there is also a private and enclosed rear garden, mostly laid to grass, with beds ideal for gardeners.

To view the Material Information Certificate for this property please click [Here](#) or contact us to request a copy

Floorplan



Made with Metropix ©2025



TO ARRANGE A VIEWING PLEASE CONTACT:
Tel: 01256 769999 or Email: info@bridges.co.uk



Important Notice - These particulars are set out as a general outline only for the guidance of intended purchasers/tenants and do not form part of any offer or contract and must not be relied upon as statements or representations of fact. Purchasers/Tenants must satisfy themselves by inspection or otherwise as to their correctness.