



## Four Bedroom Detached House

**Marlborough Rise, Camberley, Surrey, GU15 2ED**

Price: £850,000

- Four Bedrooms
- Three Reception Rooms
- Garage
- Modern Kitchen
- Driveway Parking
- Town Centre Location
- Mature Gardens
- EPC: C (70)





## Description

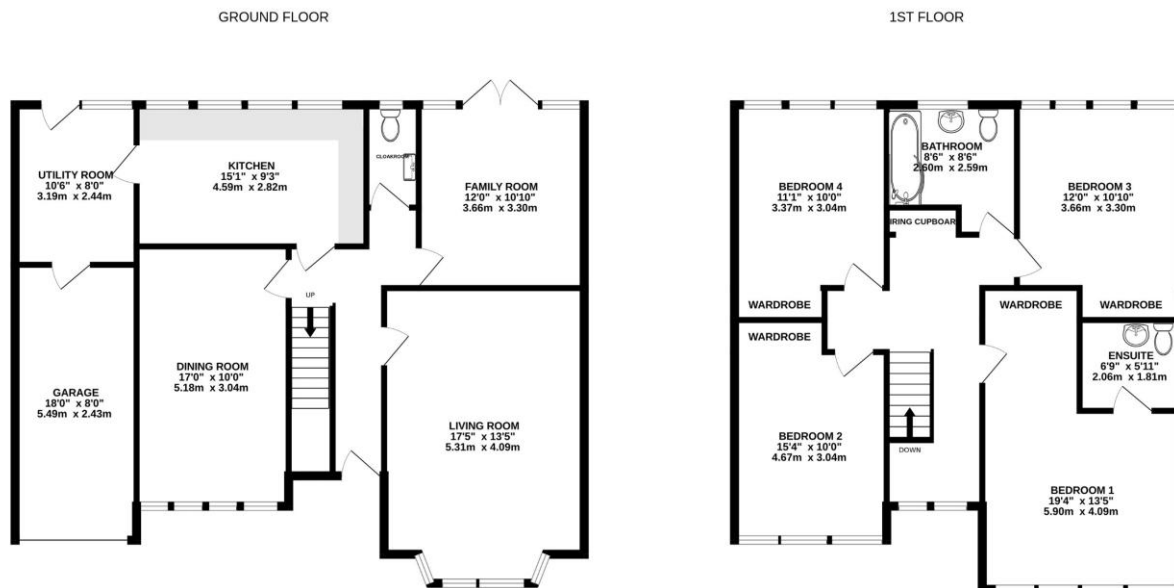
This stunning four-bedroom detached family home is situated in a desirable location in central Camberley, close to railway stations and local amenities. The property boasts a blend of modern style and family-friendly features, making it perfect for comfortable living. The ground floor accommodation comprises a modern refitted kitchen with integrated appliances, offering both functionality and style, ideal for family gatherings and entertaining, a utility room conveniently positioned with access to the integral garage and rear garden entrance, enhancing practicality for daily living there is a generously sized family room, an elegant living room and bright dining room, each providing ample space for relaxation and socializing, and a cloakroom. Upstairs features four spacious bedrooms, with the principal bedroom benefiting from an en suite bathroom for added privacy and comfort, and a further modern family bathroom stylishly designed and well equipped with modern fixtures.

## Outside

To the front there is driveway parking and an attractive garden area, and to the rear there is a landscaped, split-level mature gardens with a patio area perfect for outdoor entertaining, complemented by a charming summer house for leisure activities. Located centrally in Camberley, the property is conveniently close to rail links and a variety of local shops and amenities, enhancing its appeal for families and commuters alike.

To view the Material Information Certificate for this property please click [Here](#) or contact us to request a copy.

## Floorplan



Whilst every attempt has been made to ensure the accuracy of the floorplan contained here, measurements of doors, windows, rooms and any other items are approximate and no responsibility is taken for any error, omission or mis-statement. This plan is for illustrative purposes only and should be used as such by any prospective purchaser. The services, systems and appliances shown have not been tested and no guarantee as to their operability or efficiency can be given.  
Made with Metropix ©2025



TO ARRANGE A VIEWING PLEASE CONTACT:

Tel: 01276 685544 or Email:

[camberley@bridges.co.uk](mailto:camberley@bridges.co.uk)



**Important Notice** - These particulars are set out as a general outline only for the guidance of intended purchasers/tenants and do not form part of any offer or contract and must not be relied upon as statements or representations of fact. Purchasers/Tenants must satisfy themselves by inspection or otherwise as to their correctness.