



## One Bedroom Apartment

**Station Road, Hook, Hampshire, RG27 9QR**

**Price: £250,000**

- One Double Bedroom
- Underground Parking
- Modern Apartment
- Penthouse
- Spacious Balcony
- Top Floor
- Lift Access
- EPC: B (85)



## Description

We are delighted to present this exceptional one bedroom penthouse apartment, located in the heart of Hook. A true highlight of this property is its expansive rooftop terrace, providing the perfect space for relaxing and entertaining.

The well planned layout features a spacious double bedroom with a generous eave's cupboard, offering the versatility to be used as a walk in wardrobe. The kitchen has been cleverly designed to maximise both space and comfort, complete with fully integrated appliances ready for immediate use.

Beautifully presented in a modern decorative style, this penthouse blends elegance with practicality. Residents enjoy the benefits of a secure, well maintained development with video entry and fob controlled access, ensuring peace of mind. In addition, the property includes a dedicated underground parking space, protected by an electric door for safe and convenient access.

This is a rare opportunity to secure a high specification penthouse apartment in a prime Hook location, perfect for first time buyers, downsizers, or investors looking for a home that combines style and substance.

## Outside

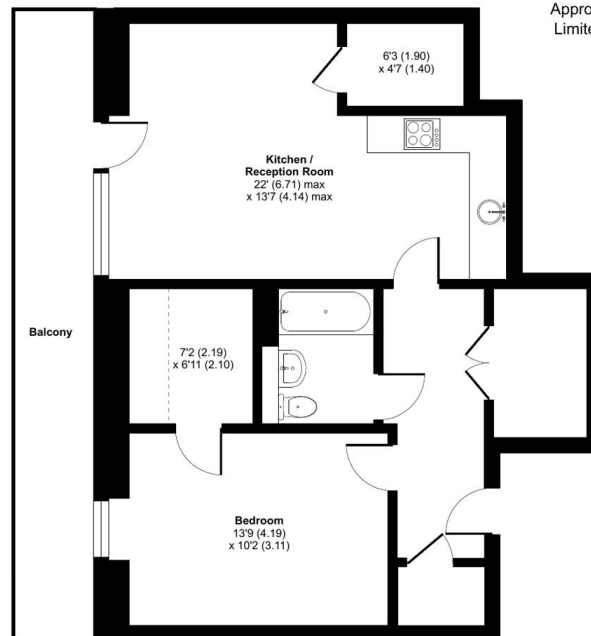
This top floor penthouse apartment includes secure underground parking, accessed via a fob controlled door that leads directly into the building. From there, a lift takes you straight to your floor, providing both convenience and peace of mind. The apartment also boasts a spacious private balcony, offering an excellent blend of comfort and privacy.

To view the Material Information Certificate for this property please click [Here](#) or contact us to request a copy

## Floorplan



### Chawton Court, Station Road, Hook, Hampshire, RG27



Approximate Area = 660 sq ft / 61.4 sq m  
 Limited Use Area(s) = 15 sq ft / 1.3 sq m  
 Total = 675 sq ft / 62.7 sq m  
 For identification only - Not to scale

SECOND FLOOR

Floor plan produced in accordance with RICS Property Measurement 2nd Edition, incorporating International Property Measurement Standards (IPMS2 Residential). © nitchcom 2025. Produced for Bridges Estate Agents. REF: 1345040



TO ARRANGE A VIEWING PLEASE CONTACT:  
 Tel: **01256 769999** or Email: **info@bridges.co.uk**



Important Notice - These particulars are set out as a general outline only for the guidance of intended purchasers/tenants and do not form part of any offer or contract and must not be relied upon as statements or representations of fact. Purchasers/Tenants must satisfy themselves by inspection or otherwise as to their correctness.