



Four Bedroom Detached House

Bow Field, Hook, Hampshire, RG27 9SA

Price: £750,000

- Four Double Bedrooms
- Modern En Suite Shower Room
- Refitted Kitchen with Breakfast Area
- Double Garage and Driveway
- Spacious Dual Aspect Living Room
- Spacious Southwest Facing Garden
- Potential to Extend (STPP)
- EPC: TBC



Description

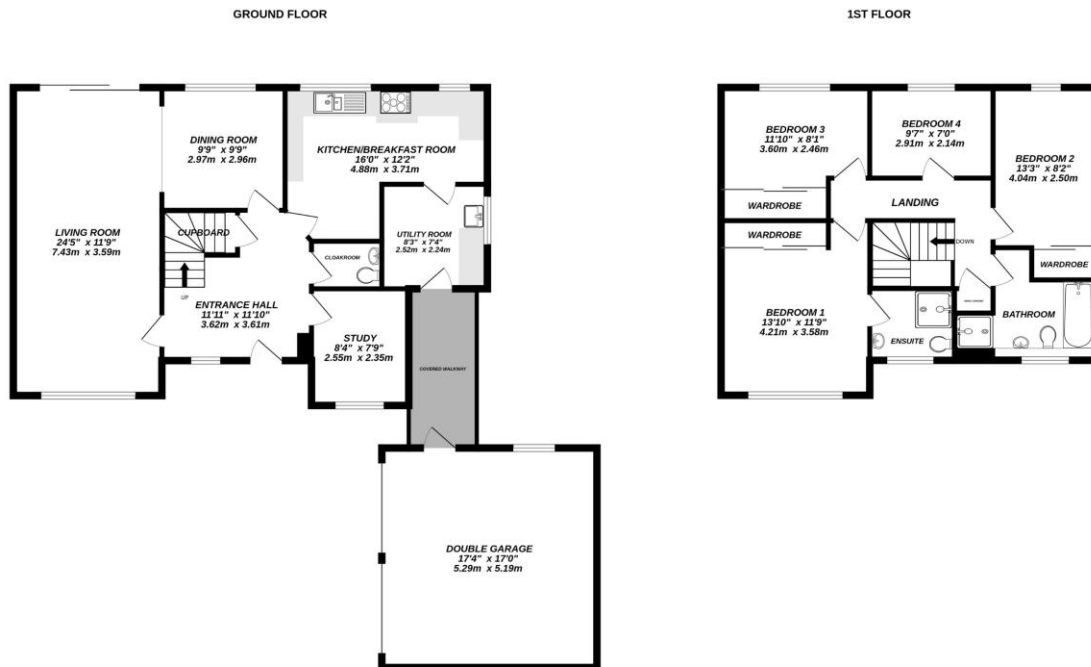
Offered to the market for the first time since it was built in 1988, this wonderful four bedroom family home was crafted by Martin Grant Homes as part of their sought after "Eversley" design. From the moment you step into the spacious entrance hall, the feeling of light and space is immediate. To your left, the living room stretches from front to back, with natural light flooding in from both ends. Sliding doors draw your eye towards the garden, while an archway leads seamlessly into the dining room, creating a lovely flow for entertaining or family gatherings. The kitchen, thoughtfully refitted, offers plenty of room for cooking and a breakfast area that feels perfect for relaxed mornings. From here, a door leads to the utility room and then on to a covered walkway, connecting directly to the double garage. A study and cloakroom complete the ground floor, with a generous understairs cupboard neatly tucked away. Upstairs, the landing opens up beautifully, giving a real sense of space. The principal bedroom, with fitted wardrobes and a modern, recently fitted en suite, feels calm and inviting. Two further double bedrooms also enjoy fitted storage, while the fourth bedroom is a comfortable single that could easily double as a hobby room or home office. A four piece family bathroom and an airing cupboard complete the upper floor.

Outside

The property is set back from the road behind a generous frontage, with a driveway that can accommodate up to six cars and leads to the double garage. The garden is a real highlight, enjoying a sunny southwest aspect and an L shaped design that offers far more space than you might expect. It stretches behind the house, extends to the side, and continues behind the garage, creating distinct areas that could be landscaped, used for entertaining, or even developed further (STPP). An abundance of shrubs, including over 20 rose bushes, border the garden, while the expanse of lawn invites family play, summer gatherings, or simply quiet moments in the sun. This is an outside space that feels both established and full of potential, ready to be shaped to suit the next owner's lifestyle.

To view the Material Information Certificate for this property please click [Here](#) or contact us to request a copy.

Floorplan



Made with Metropix ©2025



TO ARRANGE A VIEWING PLEASE CONTACT:
Tel: 01256 769999 or Email: info@bridges.co.uk



Important Notice - These particulars are set out as a general outline only for the guidance of intended purchasers/tenants and do not form part of any offer or contract and must not be relied upon as statements or representations of fact. Purchasers/Tenants must satisfy themselves by inspection or otherwise as to their correctness.