



Two Bedroom Apartment

Gordon Road, Camberley, Surrey, GU15 2JQ

Guide Price: £275,000

- Two Bedrooms
- First Floor
- Executive Apartment
- En Suite and Bathroom
- Gated Development
- Allocated Parking
- No Onward Chain
- EPC: B (81)



Description

A well-presented two-bedroom first floor executive apartment located within a gated development in Camberley town centre. The property benefits from secure allocated parking, communal gardens and is offered to the market with no onward chain. The accommodation comprises a well-proportioned living/dining room, separated fitted kitchen, a principal bedroom with fitted wardrobes and an en suite shower room, a further double bedroom and family bathroom.

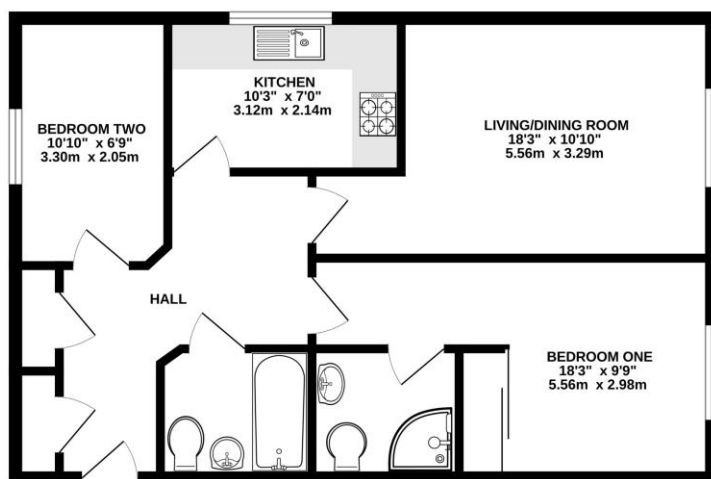
Outside

Externally the property benefits from a spacious communal gardens space to the rear of the property as well as an allocated parking space all set within the secure gated development.

To view the Material Information Certificate for this property please click [Here](#) or contact us to request a copy.

Floorplan

FIRST FLOOR



Whilst every attempt has been made to ensure the accuracy of the floorplan contained here, measurements of doors, windows, rooms and any other items are approximate and no responsibility is taken for any error, omission or mis-statement. This plan is for illustrative purposes only and should be used as such by any prospective purchaser. The services, systems and appliances shown have not been tested and no guarantee as to their operability or efficiency can be given.
Made with Metropix C3025



TO ARRANGE A VIEWING PLEASE CONTACT:

Tel: **01276 685544** or Email:
camberley@bridges.co.uk



Important Notice - These particulars are set out as a general outline only for the guidance of intended purchasers/tenants and do not form part of any offer or contract and must not be relied upon as statements or representations of fact. Purchasers/Tenants must satisfy themselves by inspection or otherwise as to their correctness.