



MINLEY ROAD | FARNBOROUGH

**Platinum
Homes**
BY BRIDGES



The Property

Spread across three spacious floors, this detached five/six bedroom home offers over 3,300 square feet of flexible living, finished to an exceptional standard by the current owners.

The heart of the house is the open plan kitchen/living/breakfast area complete with a sleek breakfast bar, integrated appliances, and a family area, perfect for everyday life or entertaining. Two further reception rooms, a dining area, and the option of a ground floor bedroom with a shower room and a secondary kitchen provide impressive versatility. A garden facing games room with its own shower room and storage adds further flexibility.

Upstairs, the first-floor hosts four generous double bedrooms, three enjoying dual aspect windows, along with a stylish bathroom and a separate shower room.

The top floor offers additional adaptable space which is currently a bedroom but is ideal as a cinema, games room, or an office.



Outside

Outside, a secure gated entrance opens to a sweeping driveway with parking for up to six vehicles.

The landscaped, low maintenance grounds complement the fully rendered exterior, completing a home that is ready to move straight into.



Features

- Five/Six Bedrooms
- Four Bathrooms
- Open Plan Living
- Close to the Mainline Railway Station
- Versatile Accommodation
- Close to Local Schools
- Ample Parking
- EPC: C (77)
- Council Tax Band: F

Contact

Philip Gascoyne

pgascoyne@platinumbybridges.co.uk

01252 975501



Minley Road, Farnborough, Hampshire, GU14

Approximate Area = 3013 sq ft / 279.9 sq m

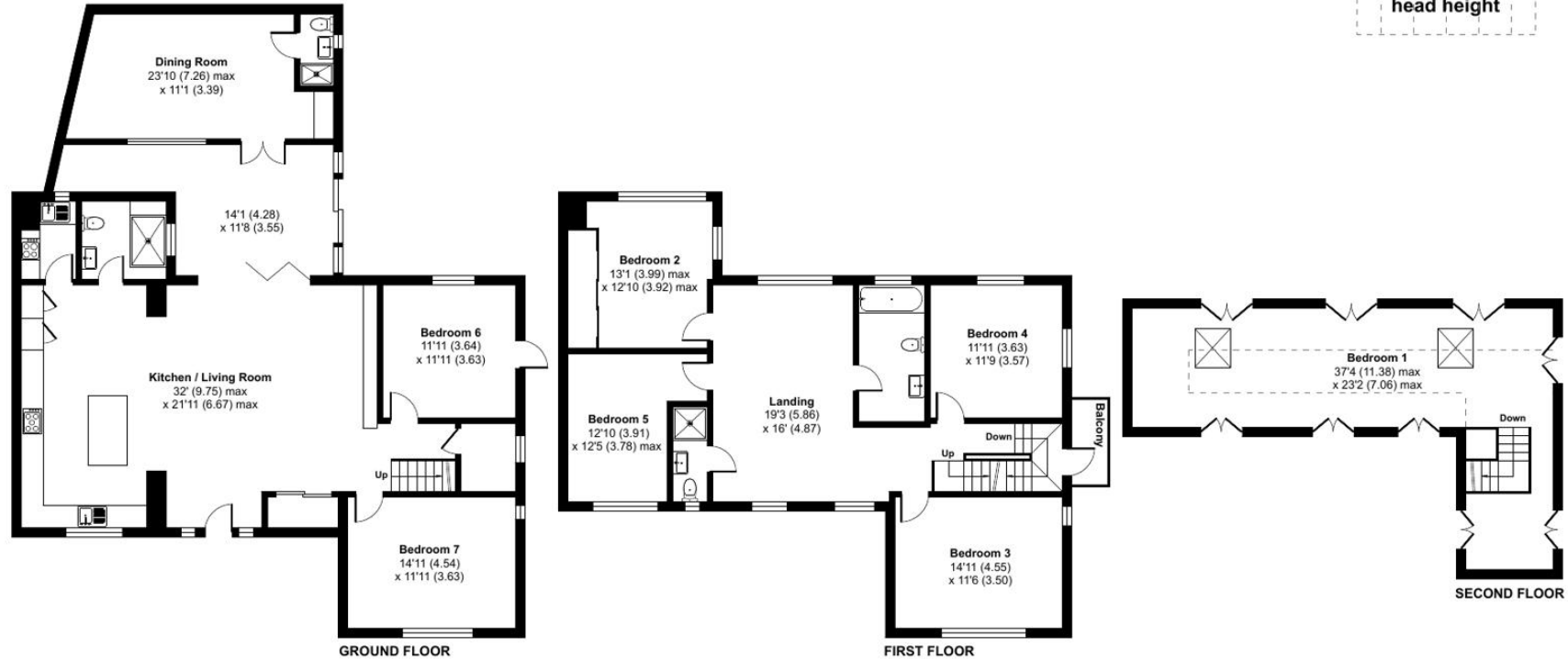
Limited Use Area(s) = 247 sq ft / 22.9 sq m

Total = 3260 sq ft / 302.9 sq m

For identification only - Not to scale



Denotes restricted
head height



Certified
Property
Measurer

Floor plan produced in accordance with RICS Property Measurement Standards incorporating International Property Measurement Standards (IPMS2 Residential). © nitchecom 2024.
Produced for Bridges Estate Agents Ltd (Platinum Homes). REF: 1088477

**Platinum
Homes**
BY BRIDGES

Important Notice - These particulars are set out as a general outline only for the guidance of intended purchasers and do not form part of any offer or contract and must not be relied upon as statements or representations of fact. Purchasers must satisfy themselves by inspection or otherwise as to their correctness.

