



Three/Four Bedroom Semi-Detached House

Sandhurst Lane, Blackwater, Camberley, Hampshire, GU17 0DH

Price: £450,000

- Three/Four Bedrooms
- Semi-Detached House
- Two/Three Reception Rooms
- Enclosed Rear Garden
- Off Street Parking
- Close to Amenities
- Solar Panels
- EPC: D (64)



Description

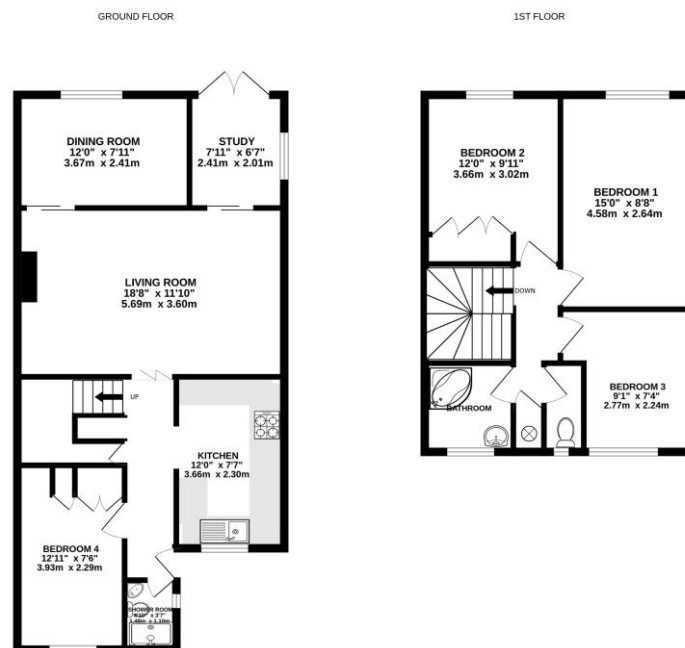
This charming semi-detached house situated on Sandhurst Lane offers a perfect blend of space and functionality. Boasting three/four well-appointed bedrooms, the property features a converted garage that serves as a stylish reception room, ideal for entertaining or relaxing with family. The ground floor comprises a spacious lounge and a separate dining room, perfect for family gatherings and a further study/bedroom area. A convenient kitchen and a valuable storeroom provide ample storage. The property also includes a modern shower room and toilet for added convenience. Upstairs, you'll find three comfortable bedrooms complemented by a family bathroom. Outside, the enclosed garden is a delightful retreat, featuring a raised decked area suitable for outdoor dining and relaxation. The property also benefits from solar panels to the roof with battery and at least 10 years FTT payments remaining. With parking for multiple vehicles and located close to local shops and schools, this home in Blackwater is perfect for families seeking a peaceful yet convenient living environment. Don't miss the opportunity to make this lovely property your own!

Outside

Externally, the property benefits from an enclosed rear garden that is mainly artificial grass with a patio area and side access to the front. To the front you have a block paved driveway for multiple vehicles. The property is conveniently located within easy access to local amenities, great commuter links via the A30/M3, and excellent local schools.

To view the Material Information Certificate for this property please click [Here](#) or contact us to request a copy.

Floorplan



Whilst every attempt has been made to ensure the accuracy of the floorplan contained here, measurements of doors, windows, rooms and any other items are approximate and no responsibility is taken for any error, omission or misstatement. This plan is for guidance purposes only and should be used as a guide only. No guarantee is given as to their accuracy or efficiency can be given. Made with Metreplan 10.0.0



TO ARRANGE A VIEWING PLEASE CONTACT:

Tel: 01276 685544 or Email:

camberley@bridges.co.uk



Important Notice - These particulars are set out as a general outline only for the guidance of intended purchasers/tenants and do not form part of any offer or contract and must not be relied upon as statements or representations of fact. Purchasers/Tenants must satisfy themselves by inspection or otherwise as to their correctness.