



Four Bedroom Detached House

Lovells Close, Lightwater, Surrey, GU18 5RS

Guide Price: £625,000

- Four Bedroom Detached House
- No Onward Chain
- Refitted Kitchen
- Much Improved
- Re-fitted En Suite and Family Bathroom
- Open Plan Kitchen Space
- Driveway and Garage
- EPC: D (66)



Description

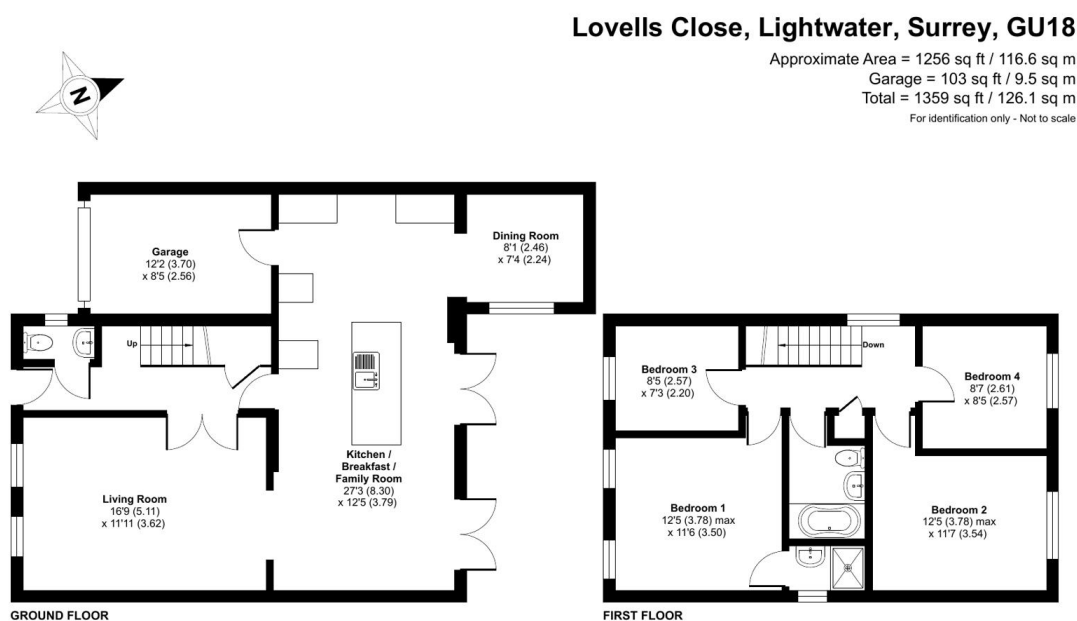
A well-presented four bedroom detached family home located in a cul-de-sac location within the sought after Surrey Village of Lightwater. The property benefits from many improvements by the current owners and is offered to the market with no onward chain. The accommodation comprises a living room, refitted open plan kitchen/dining room opening on to the family room and cloakroom all on the ground floor. To the first floor you have a principal bedroom with refitted en suite shower room, three further bedrooms and refitted family bathroom.

Outside

Externally the property benefits from mature enclosed rear gardens mainly laid to lawn with patio area for entertaining. To the front you have ample driveway parking leading to the attached single garage.

To view the Material Information Certificate for this property please click [Here](#) or contact us to request a copy.

Floorplan



Floor plan produced in accordance with RICS Property Measurement 2nd Edition, incorporating International Property Measurement Standards (IPMS2 Residential). © nitchcom 2025. Produced for Bridges Estate Agents. REF: 1332364



TO ARRANGE A VIEWING PLEASE CONTACT:

Tel: 01276 685544 or Email:

camberley@bridges.co.uk



Important Notice - These particulars are set out as a general outline only for the guidance of intended purchasers/tenants and do not form part of any offer or contract and must not be relied upon as statements or representations of fact. Purchasers/Tenants must satisfy themselves by inspection or otherwise as to their correctness.