



Four Bedroom Detached House

Cumberland Road, Camberley, Surrey, GU15 1QX

Guide Price: £650,000

- Four Bedrooms
- Detached House
- No Onward Chain
- Opposite Fields
- Close to Local Shops
- Great School Catchments
- Potential to Extend STTP
- EPC: D (62)



Description

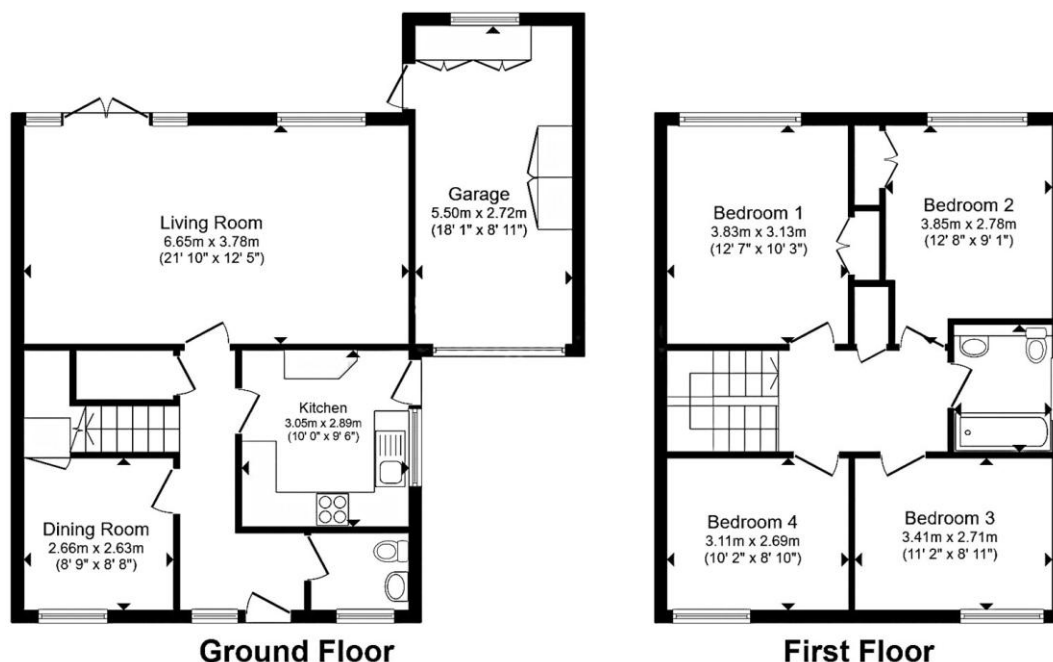
*****NO ONWARD CHAIN***** This family home was originally a showhouse and has a long overall plot of over 110ft. The house is somewhat deeper than wide, creating a floorspace of 1381 square ft. It was chosen by the original owners specifically because of its location and plot. This detached four-bedroom family home is situated opposite woods and is within close proximity of the amazing Red Woods and Wellingtonia Avenue Walk, local shops including Sainsburys and the post office. There is also potential to extend (STPP). Accommodation includes a spacious entrance hall, living room measuring over 21ft with views over the rear garden, a dining/study room, kitchen, and a cloakroom. Upstairs a generous landing serves four double bedrooms and the family bathroom. It is within the catchment of Heather Ridge Infants School, alongside Ravenscote and Tomlinscote schools. For the commuter, there are good railway connections to London. The M3 is nearby for access to London, the M25, and Heathrow Airport. This has been a happy family home for over 50 years and viewings are highly recommended!

Outside

To the front there is driveway parking for multiple vehicles. Both front and rear gardens are mature and well-kept with the rear garden being fully enclosed and benefitting from a generous patio area with the rest laid to lawn and a shed.

To view the Material Information Certificate for this property please click [Here](#) or contact us to request a copy.

Floorplan



TO ARRANGE A VIEWING PLEASE CONTACT:

Tel: **01276 685544** or Email:

camberley@bridges.co.uk



Important Notice - These particulars are set out as a general outline only for the guidance of intended purchasers/tenants and do not form part of any offer or contract and must not be relied upon as statements or representations of fact. Purchasers/Tenants must satisfy themselves by inspection or otherwise as to their correctness.