



Two Bedroom Apartment

Allington Close, Farnham, Surrey, GU9 9EJ

Price: £289,000

- Two Bedrooms
- En Suite to Principal Bedroom
- No Onward Chain
- Beautifully Presented
- Allocated Parking
- Walking Distance to Farnham Town and Park
- Estimated Rental Price £1,100 pcm
- EPC: B (83)



Description

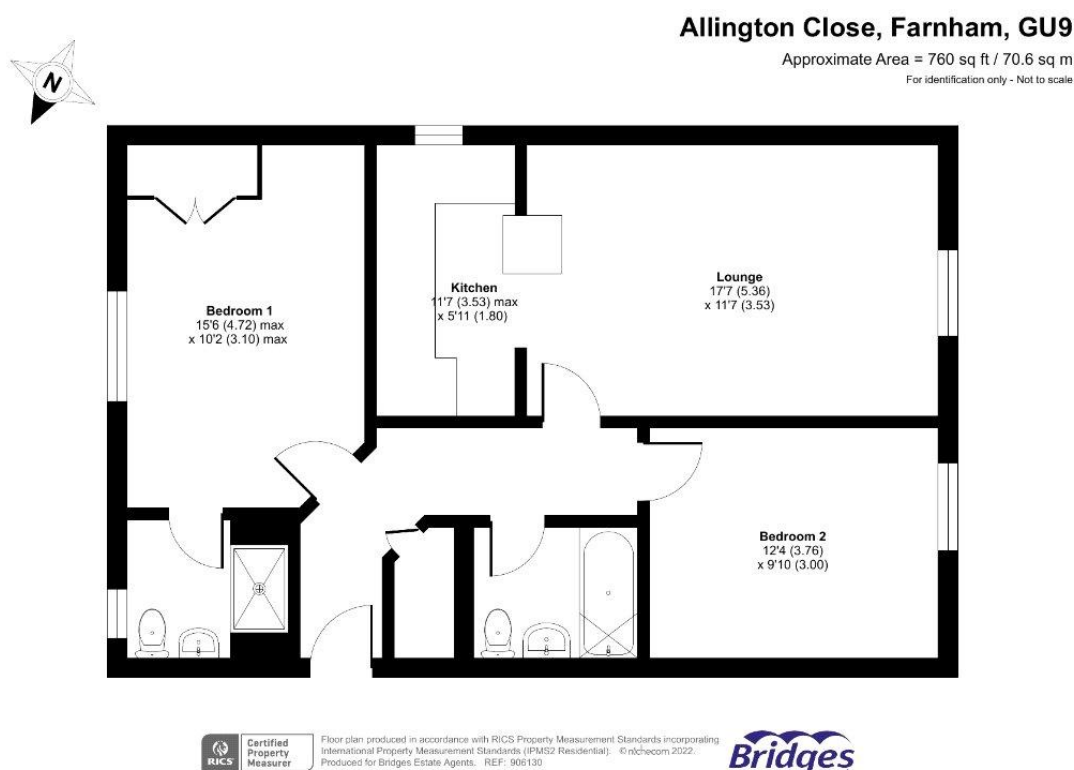
Available to the market, with no onward chain, is this beautifully presented two-bedroom apartment offering contemporary and spacious living throughout, within walking distance of Farnham town centre and Farnham Park. The accommodation comprises two double bedrooms with the principal bedroom having the added luxury of its own en suite shower room. There is an attractive open plan lounge/dining room/fitted kitchen area that offers an ideal place to relax/entertain. In addition, there is a three-piece family bathroom suite.

Outside

The apartment has allocated parking and is 0.9 miles from Farnham station.

To view the Material Information Certificate for this property please click [Here](#) or contact us to request a copy.

Floorplan



TO ARRANGE A VIEWING PLEASE CONTACT:
Tel: **01252 361550** or Email: **info@bridges.co.uk**



Important Notice - These particulars are set out as a general outline only for the guidance of intended purchasers/tenants and do not form part of any offer or contract and must not be relied upon as statements or representations of fact. Purchasers/Tenants must satisfy themselves by inspection or otherwise as to their correctness.