



## Three Bedroom End of Terrace House

**Marston Drive, Farnborough, Hampshire, GU14 8JH**

Guide Price: £385,000

- Three Bedroom
- End of Terrace House
- Built-In Wardrobes
- Downstairs Cloakroom
- Living/Dining Room
- Conservatory
- Double Glazing
- EPC: F (27)





## Description

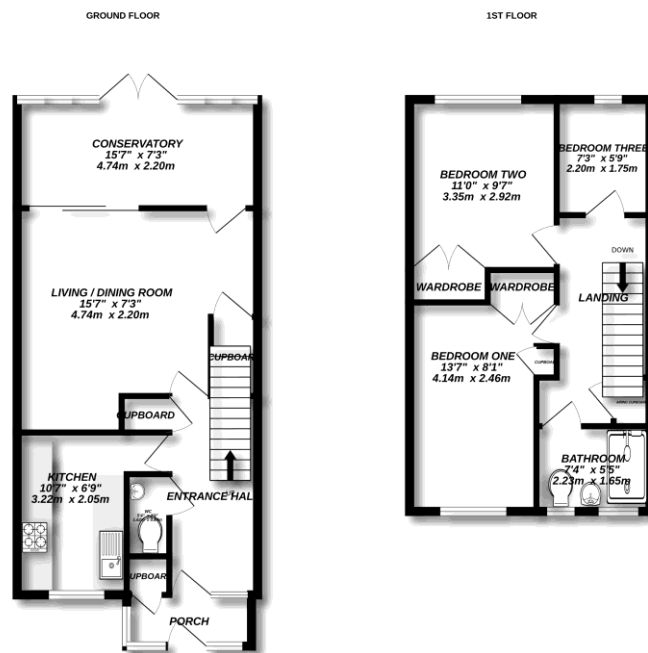
Located in a popular residential area, this well-presented three-bedroom end of terrace home offers generous living space, including a spacious open-plan living/dining area, a comfortable conservatory and a beautifully maintained mature garden. Additional features include a convenient downstairs cloakroom and an upstairs shower room with a walk-in shower. Ideal for families or those seeking versatile living in a sought-after location.

## Outside

Lovely mature garden full of colours and complete with a vegetable patch. Ideal for a keen gardener.

To view the Material Information Certificate for this property please click [Here](#) or contact us to request a copy.

## Floorplan



Made with Metrepa 0025



TO ARRANGE A VIEWING PLEASE CONTACT:  
Tel: **01252 361550** or Email: **info@bridges.co.uk**



Important Notice - These particulars are set out as a general outline only for the guidance of intended purchasers/tenants and do not form part of any offer or contract and must not be relied upon as statements or representations of fact. Purchasers/Tenants must satisfy themselves by inspection or otherwise as to their correctness.